


---

---

---

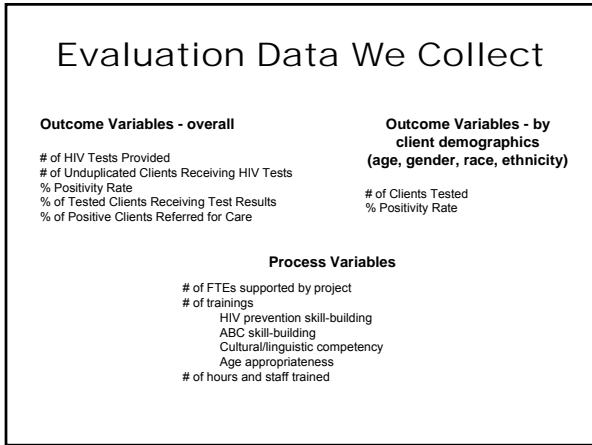
---

---

---

---

---




---

---

---

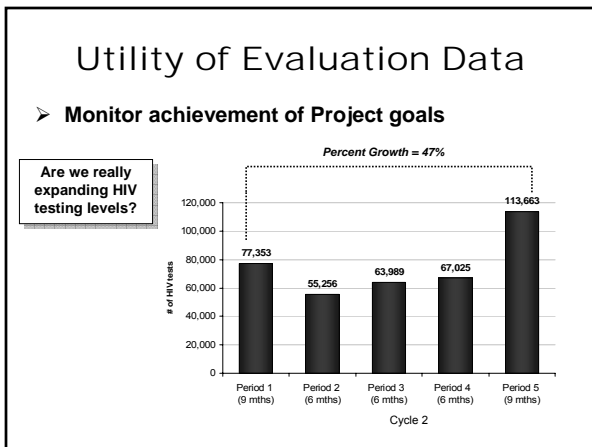
---

---

---

---

---




---

---

---

---

---

---

---

---

To what extent are we reaching at-risk populations?

**FACE THE FACTS**

- Women currently account for 26 % of all new HIV/AIDS diagnoses.
- In 2004, HIV infection was the 5 th leading cause of death among all women ages 35-44.
- According to the 2005 census, black and Hispanic women represent 24% of all US women. Women in these 2 groups accounted 82 % of the estimated total of AIDS diagnoses for women in 2005.

---

---

---

---

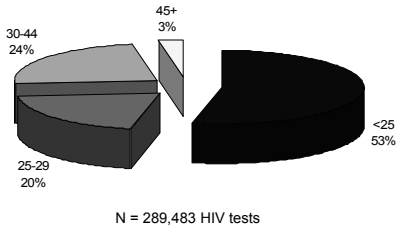
---

---

---

---

**Age Distribution of Female HIV Tests**  
Cycle 2, Period 1-5




---

---

---

---

---

---

---

---

**Comparing Our Data to National Surveillance Data**

CDC Surveillance Data for Age at HIV/AIDS Diagnosis, 2005						
	<13	13-19	20-29	30-39	40-49	50+
% of HIV/AIDS Cases by Age at Diagnosis	0.5%	3%	23%	30%	28%	15%

26% of HIV/AIDS cases diagnosed at < age 30

HIV Integration Project, 2004-2007						
	<15	15-19	20-29	30-44	45+	
% of HIV Tests by Age Group	1.0%	23%	50%	23%	3%	
% of Positive Tests by Age Group	0.2%	11%	37%	43%	8%	

74% of tested < age 30  
49% of positives diagnosed at < age 30

---

---

---

---

---

---

---

---

**Racial/Ethnic Distribution of HIV Tests**  
*Cycle 2, Period 2-5*

		Race						
		Caucasian/ White	African American/ Black	Asian	American Indian/ Alaskan Native	Native Hawaiian/ Other Pacific Islander	More than One Race	Unknown/ Not Reported
Ethnicity	Hispanic or Latino	55,907	5,306	110	537	153	10,750	49,783
		19.3%	1.8%	0.0%	0.2%	0.1%	3.7%	17.2%
	Not Hispanic or Not Latino	70,115	80,119	4,611	1,707	531	1,957	2,601
		24.2%	27.7%	1.6%	0.6%	0.2%	0.7%	0.9%
Unknown or Not Reported		679	254	1,035	128	10	286	2,552
		0.2%	0.1%	0.4%	0.0%	0.0%	0.1%	0.9%

Racial/ethnic minorities = over 73% of clients tested

---

---

---

---

---

---

---

---

---

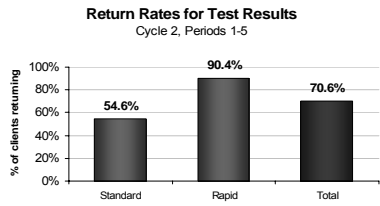
---

---

---

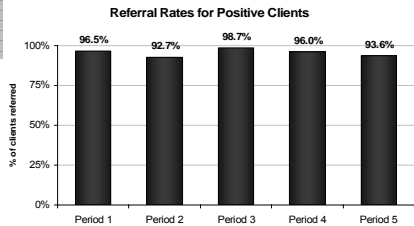
➤ **Improve service delivery and project outcomes**

What benefit does rapid testing provide?



Return rates go way up with rapid testing

How are we doing in linking positive clients with care?



Keep working toward 100% referral rates!

---

---

---

---

---

---

---

---

---

---

---

---



---

---

---

---

---

---

---

---

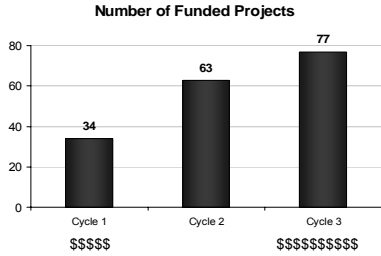
---

---

---

---

➤ Advocate for increased funding




---

---

---

---

---

---

---

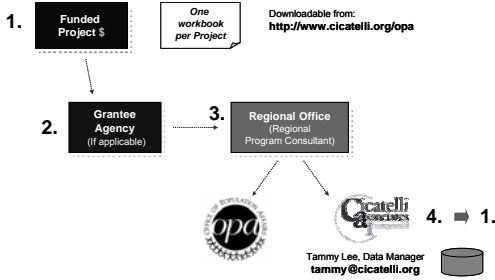
---

---

---

## Data Reporting and Analysis

➤ Data submission and QA process




---

---

---

---

---

---

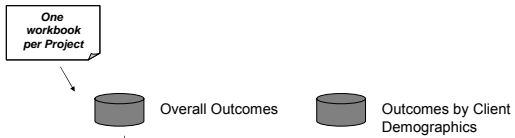
---

---

---

---

➤ Data analysis process



CONFIDENTIAL AND PROPRIETARY - Confidential					CONFIDENTIAL AND PROPRIETARY - Anonymous				
Region	State	Funder	Grantee	Delegate	(A) # of Individual HIV Prevention Counseling Sessions	(B) # of HIV Tests Provided Through HIV Tests	(C) Unmet Need of Clients Receiving HIV Tests	(D) # of Individual HIV Prevention Counseling Sessions	(E) # of HIV Tests Provided Through HIV Tests
I	MA	Title A	Project A		1,700	1,244	1,183		
I	MA	Title A	Project B		366	264	262		
I	MA	Title A	Contractor A	Project C	435	435	435		
I	CT	Title A	Project D		1,134	4,551	4,551		
I	RI	Title A	Project E		4,814	2,771	2,743	131	131
II	NY	MAP	Contractor B	Project F	1,115	1,358	1,322		
II	NY	MAP	Contractor C	Project G	1,343	1,355	1,181		
<b>TOTAL</b>					<b>145,723</b>	<b>155,836</b>	<b>145,456</b>	<b>6,246</b>	<b>6,246</b>

Calculate subtotals  
=SUBTOTAL(9, F3:F9)

---

---

---

---

---

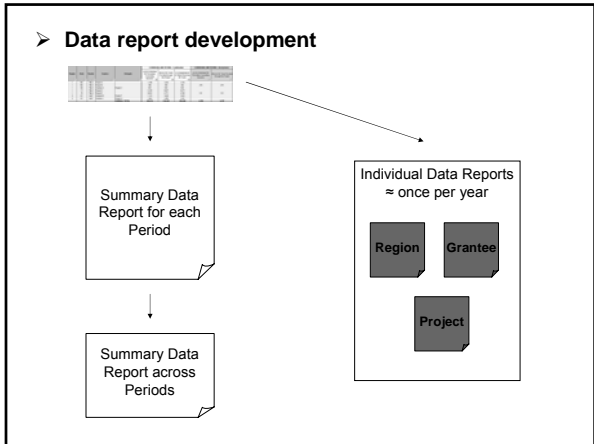
---

---

---

---

---




---



---



---



---



---



---



---

## Data Challenges

➤ **Large-scale data collection**  
 Analysis of data across 10 regions, 43 grantees, and 77 projects

➤ **Need for quality assurance**  
 QA data to avoid common reporting errors  
 Use data validation tools  
 Observe four check points in data submission process

➤ **Data interpretation**  
 Positivity rates  
 Varying lengths of data reporting periods

---



---



---



---



---



---



---