

Tennessee

Expedited Partner Treatment (Partner Delivered Therapy)

Donna Freeman, FNP-BC

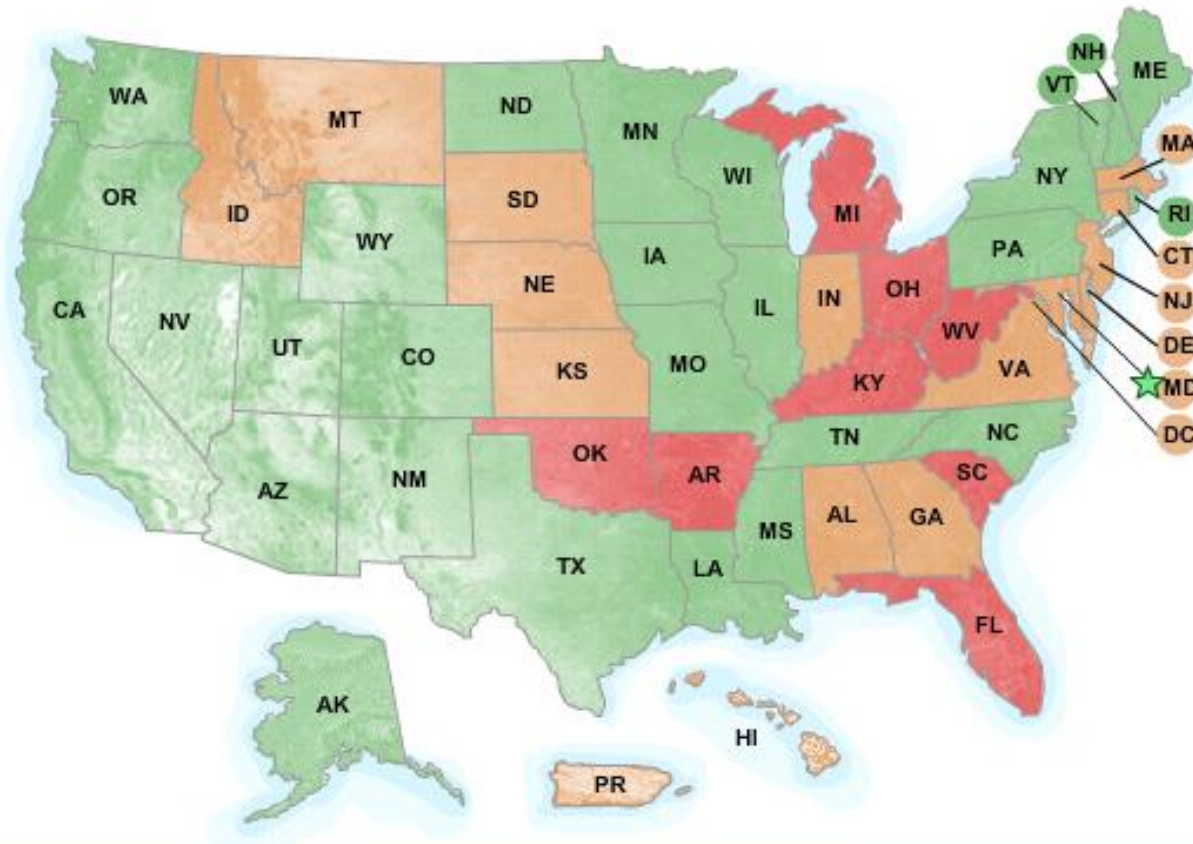
Supervisor, Packer Clinic

Shelby County Health Department

May 19, 2011



Legal Status of EPT in Tennessee



EPT is permissible in 27 states:

EPT is potentially allowable in 15 states:

EPT is prohibited in 8 states:

Expedited Partner Therapy

T.C.A. 0880-02-.14(9a-d)


- *“This rule will allow physicians and those over whom they exercise responsibility and control to provide an effective and safe treatment to the partners of patients infected with Ct who for various reasons may not otherwise receive appropriate treatment.”*
- Prerequisites
 - Laboratory-confirmed CT infection with no evidence of co-infection with GC;
 - Provision of treatment for the index patient;
 - Attempt to persuade infected patient to have partners evaluated and treated;
 - Provision of CT fact sheet for patient and all partners;
 - Counseling patient on sexual abstinence until 7 days after treatment
- Partner Treatment
 - Provide treated patient with prescriptions (non-named signed or name-specific) for, or dispense to the patient, azithromycin for the total number of known partners






Sexually Transmitted Diseases

[Sexually Transmitted Diseases](#) > [Expedited Partner Therapy](#) > [Legal Status](#) > [Tennessee](#)

Legal Status of EPT - Tennessee

 EPT is permissible.

<p>I. Statutes/regs on health care providers' authority to prescribe for STDs to a patient's partner(s) w/out prior evaluation (Explanation)</p>	<p> EPT by physicians authorized for chlamydia only. Tenn. Comp. R. & Regs. 1050-2-.13(9)(d), 0880-2-.14(9)</p> <p> Nurses practicing at primary health centers shall not issue drugs for treatment of STDs without prior examination by physician. Tenn. Code Ann. § 63-7-124(c) (for all other STDs).</p>
<p>II. Specific judicial decisions concerning EPT (or like practices) (Explanation)</p>	
<p>III. Specific administrative opinions by the Attorney General or medical or pharmacy boards concerning EPT (or like practices) (Explanation)</p>	<p> For the treatment of Chlamydia trachomatis, physicians may provide "an effective and safe treatment to the partners of patients infected with Ct who for various reasons may not otherwise receive appropriate treatment." As such, physicians may "provide to the treated patient non-named signed prescriptions, or dispense to the patient, the appropriate quantity and strength of azithromycin sufficient to provide curative treatment for the total number of unnamed 'partners' as defined in subparagraph (b) and indicated by the patient."</p> <p>Rule 0880-2.14(9)(a)-(d) of the Tenn. State Board of Medical Examiners</p>

Scope of Implementation and CDC Evaluation

- Assessment of current partner services, including EPT implementation and facilitators/barriers to implementation
- Learn best ways to improve implementation and increase uptake of EPT and other partner services in real-world clinical settings

SCHD Clinic Eligibility and Protocol for EPT

- Only confirmed CT positive patients, with no GC co-infection, returning for treatment may receive EPT
- Up to 5 partner packs dispensed; no prescriptions



SCHD Clinic Eligibility and Protocol for EPT (cont.)

- Call-Back card for Results Hotline given to tested patients

MEMPHIS AND SHELBY COUNTY
HEALTH DEPARTMENT
814 JEFFERSON, ROOM 221

544-7786

FOR TEST RESULTS - CALL 2-4 P.M. ONLY

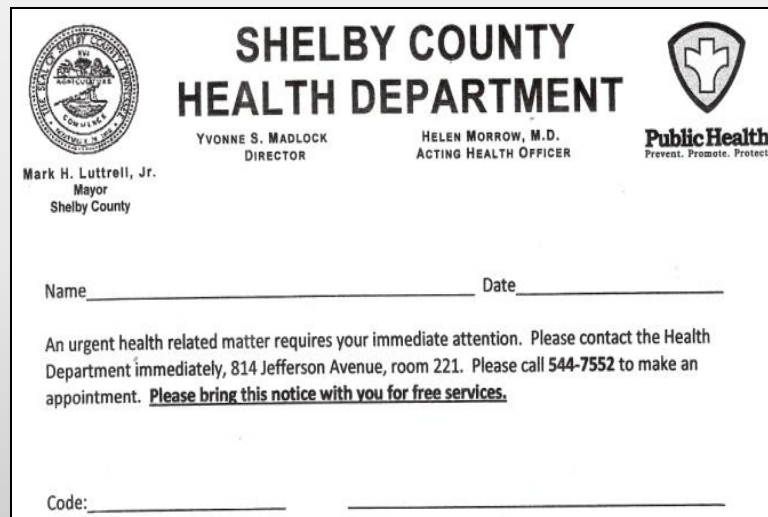
If positive return _____

HDI REV. 2/00

- Hotline clerks confirm positivity and instruct patient to return to clinic before 10:00 am
- Patient quick tracked for treatment and EPT

SCHD Clinic Eligibility and Protocol for EPT (cont.)

- Partner referral slip(s) given to empirically treated patients



The image shows a referral slip from the Shelby County Health Department. It features the department's logo on the left, which includes a circular seal with a landscape and the text 'SHELBY COUNTY HEALTH DEPARTMENT'. To the right of the seal is the text 'SHELBY COUNTY HEALTH DEPARTMENT' in large, bold letters. Below this, the names and titles of the Director and Acting Health Officer are listed: 'YVONNE S. MADLOCK, DIRECTOR' and 'HELEN MORROW, M.D., ACTING HEALTH OFFICER'. A 'Public Health' logo with a cross is on the right, with the tagline 'Prevent. Promote. Protect.' below it. The slip also includes the name of the Mayor, 'Mark H. Luttrell, Jr.', and fields for 'Name' and 'Date'. A paragraph of text provides instructions for urgent health matters, including the address '814 Jefferson Avenue, room 221' and the phone number '544-7552'. A 'Code:' field is at the bottom.

**SHELBY COUNTY
HEALTH DEPARTMENT**

YVONNE S. MADLOCK
DIRECTOR

HELEN MORROW, M.D.
ACTING HEALTH OFFICER

Public Health
Prevent. Promote. Protect.

Mark H. Luttrell, Jr.
Mayor
Shelby County

Name _____ Date _____

An urgent health related matter requires your immediate attention. Please contact the Health Department immediately, 814 Jefferson Avenue, room 221. Please call 544-7552 to make an appointment. Please bring this notice with you for free services.

Code: _____

- DIS personnel contact untreated patients with positive CT tests who have not returned to clinic after 10 days of visit

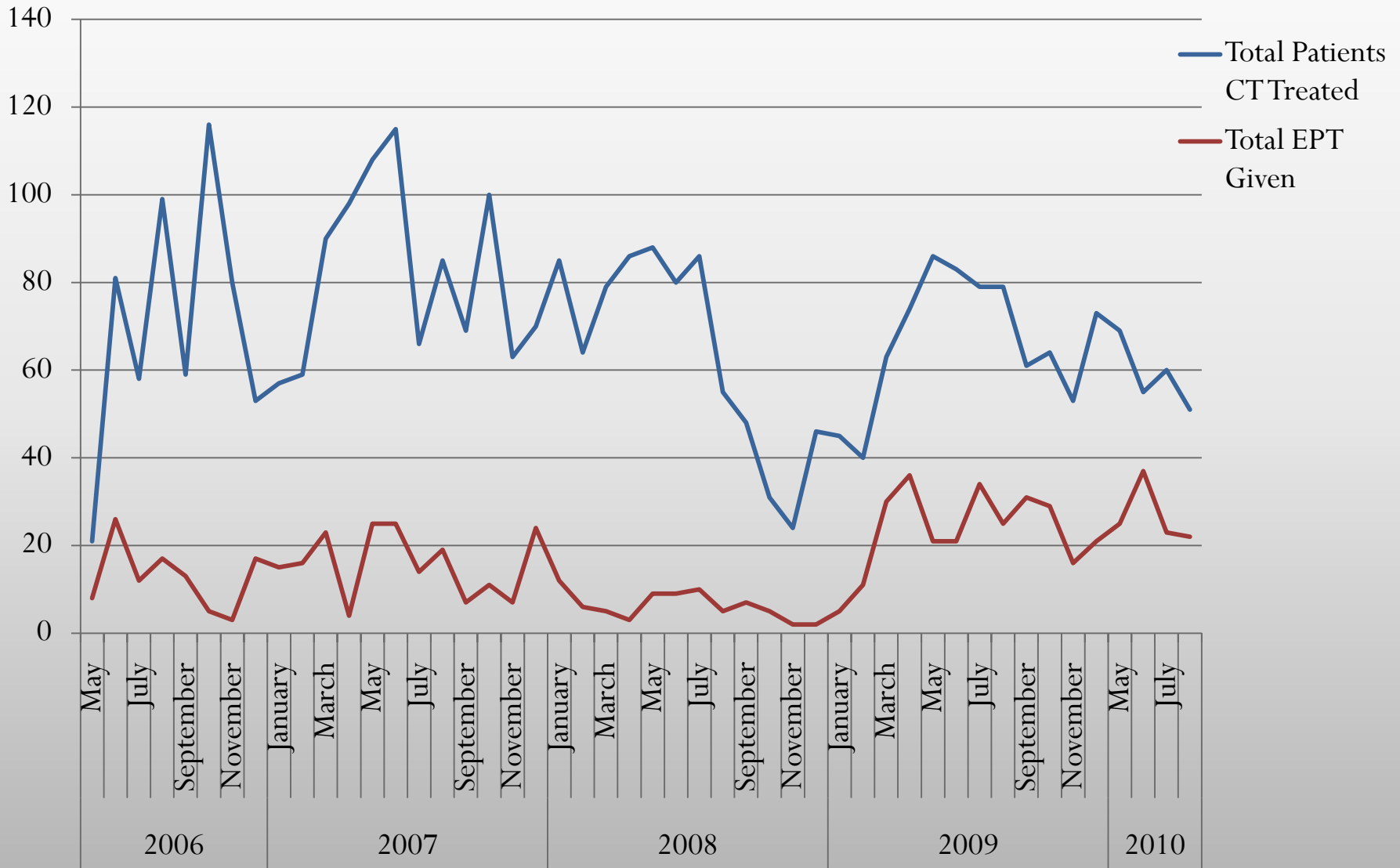
SCHD Staff Experience

- All nurses may deliver EPT
- Partner pack materials readily available/accessible with minimal interruption to flow
- Supervisor conducts one-on-one training with new nurses
- Staff survey showed majority of nurses expressed feeling comfortable in offering EPT to clients
 - Only one concern regarding fear of abuse by stockpiling medication
- SCHD has made EPT one of the graded standards/quality indicators for nursing care

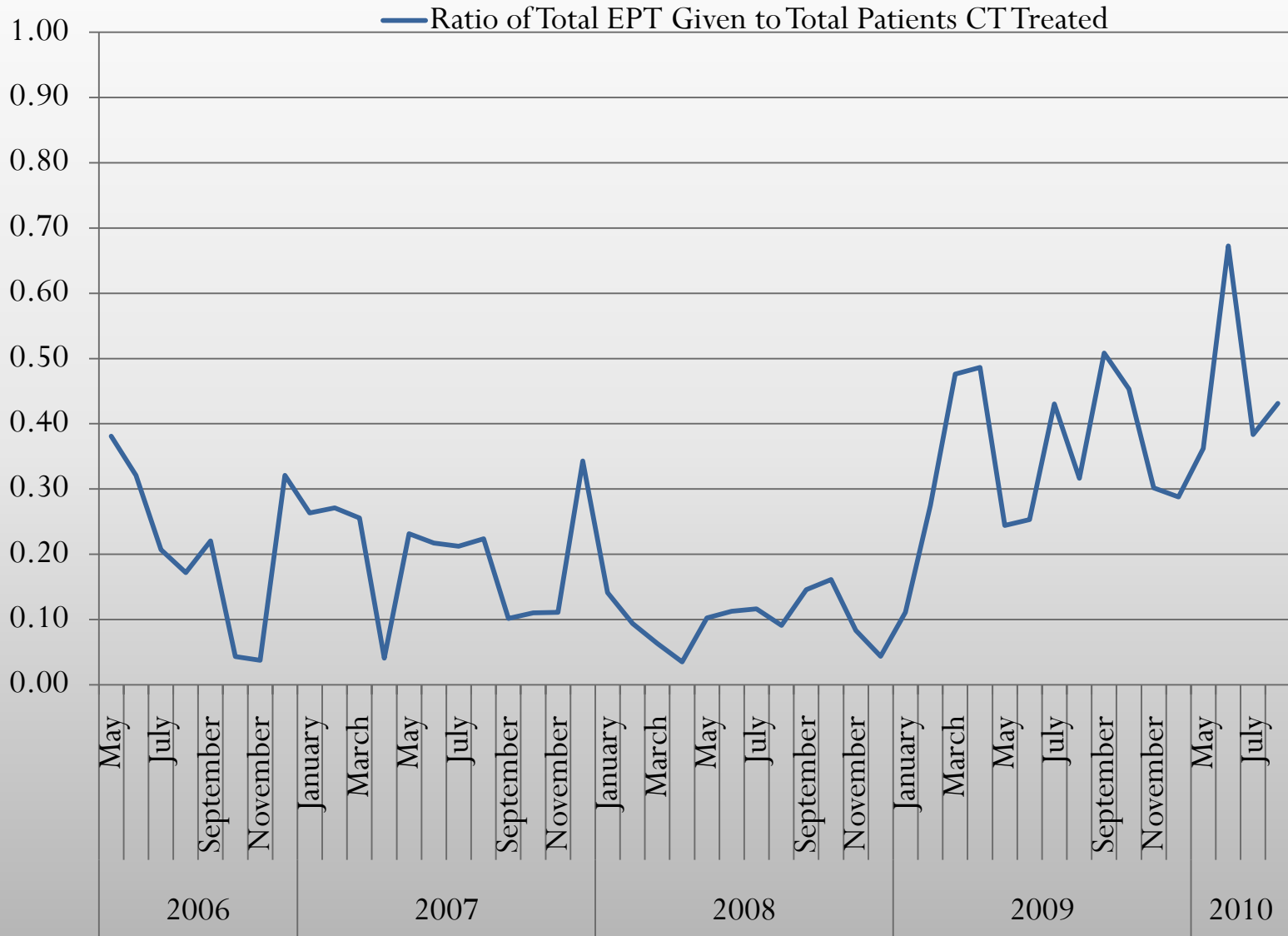
Challenges

- Small numbers of eligible patients due to high rates of presumptive treatment
- Data collection and management
 - Record when EPT is given and number of doses as standard practice
- Private physician resistance to EPT
- Funding from City of Memphis completely cut
- Loss of staffing positions

SCHD EPT Yearly Logs, 2006-2010



SCHD EPT Yearly Logs, 2006-2010



Expected Outcomes and Opportunities

- County-wide implementation of NextGen EMR
 - EMR prompts to remind providers to offer
 - Fields to capture data on patient acceptance and utilization
- Train Hotline staff to encourage patients to bring their partner(s) when they return for treatment (BYOP)
- Protocols being developed for DIS staff to deliver EPT in the field
- Preliminary data show a 10% decrease in CT since 2010 without a significant change in testing rates
 - Data shows 15% drop in CT since January 2011