

Infertility Prevention Project Region IV

**October 8-9, 2009
Charleston , South Carolina**

Steven J. Shapiro
Infertility Prevention Project Coordinator
CDC/NCHHSTP/DSTDP/PTB

Disclaimer: The findings and conclusions in this presentation are those of the author and do not necessarily represent the views of the Centers for Disease Control and Prevention.



Topics

National Infertility Prevention Project:

- Budget and Funding
- Agency Changes
- Division Updates
- IPP Activities
- National Chlamydia Coalition
- Regional Gonorrhea Meetings
- 2010 IPP Applications

National IPP Funding Allocations

1998-2008



Agency Changes

- New Director
 - Thomas Freidan, MD MPH
- Organizational Changes
 - Strengthening Surveillance, Epidemiology and Laboratory Services
 - Strengthening Support for State and Local Health Departments
 - Strengthening Global Health Work
 - Improving Policy Effectiveness
 - CDC to address health reform

DSTDP Update

- Chlamydia Immunology Consultation
 - » Special Edition of Public Health Reports
- STD Laboratory Guidelines
 - » Clinic-Based Testing for Rectal and Pharyngeal *Neisseria gonorrhoeae* and *Chlamydia trachomatis* Infections by Community-Based Organizations --- Five Cities, United States, 2007
 - » <http://www.cdc.gov/std/general/dcl-ng-ct-testing-7-13-2009.pdf>
- STD Treatment Guidelines
- Community Health Center Consultation
 - » Select Southern States

DSTDP Update [2]

- PCSI
 - » PCSI Consultation 2007
 - » PCSI Action Plan 2008
 - HIV/STD Partner Services Recommendations
 - Health Equity [Disparities] Activities
 - www.cdc.gov/nchhstp/programintegration/default.htm
- Program Evaluation and Program Improvement
 - » CQI and TQM
- Erythromycin Ointment Shortage
 - » <http://www.cdc.gov/std/treatment/DCL-ErythromycinOintmentShortage-8-31-2009.pdf>
- Ceph-R Gonorrhea Consultation
 - » Containment is not an Option
- GYT 2009

STD Awareness Campaign GYT '09

- 275,000 unique visitors to website
 - » 4X visitors compared to previous campaigns
- Planned Parenthood Affiliates
 - » Examples of Increased Screening
 - Planned Parenthood Health Systems 103%
 - Planned Parenthood Rocky Mountains
 - 1418 CT GC tests in two days
 - Normally 78 tests per day
 - Planned Parenthood Georgia
 - 64% increase in male GC screening

GYT '09

More Data

■ Planned Parenthood Affiliates

- » Preliminary Results- April 2009 only
- » 78/98 participating health centers or affiliates
 - 10 affiliates in region IV
 - 286,000 Female Visits (41% STD)
 - 88,000 CT Tests; average 5.74% positivity
 - 82,000 GC Tests; average 0.9% positivity
 - 19,000 Male Visits (80% STD)
 - 12,000+ CT Tests; average 10.17% positivity
 - 12,000 GC Tests; average 2.2% positivity

GYT '09

Next Steps

- Final PPFA Report
 - » Editorial review, awaiting leadership approval
- Separate CDC reports in Late 2009
 - » Based on stages of data submission linking GYT '09 data with IPP and SSuN data
- Partner Meeting
 - » PPFA MTV Kaiser and CDC
 - » Planning for GYT '10
 - CDC as a full partner
 - MTV sexual messaging

IPP Activities

- Pregnancy-Test Only/EC Initiatives
- Behavioral Risk Data
 - » No enhanced data variables collected across all regions
- Health Care Delivery Systems
 - » Native American and Alaskan Native Focus
- EPT
 - » Diagnostic Codes for Billing
 - » Local Concerns [?]
- HRSA 340B
 - » Appropriate use of Access

National Chlamydia Coalition

■ Website and Fact Sheet

- » www.prevent.org/NCC
- » http://www.prevent.org/images/stories/NCC/ncc%20fact%20sheet_updated%2008%2028%2009.pdf

■ Recent Publications

- » *Why Screen For Chlamydia? An Implementation Guide for Healthcare Providers*
- » Chlamydia and STD Resources for Healthcare Providers

■ Expansion of IPP Involvement

- » Shana Cash, region V
- » Kelly Opdyke, regions II and IV

■ Annual Meeting

- » December 3-4, 2009 Washington DC

V.D. CONTROL
MUSICAL PUBLIC SERVICE
ANNOUNCEMENTS



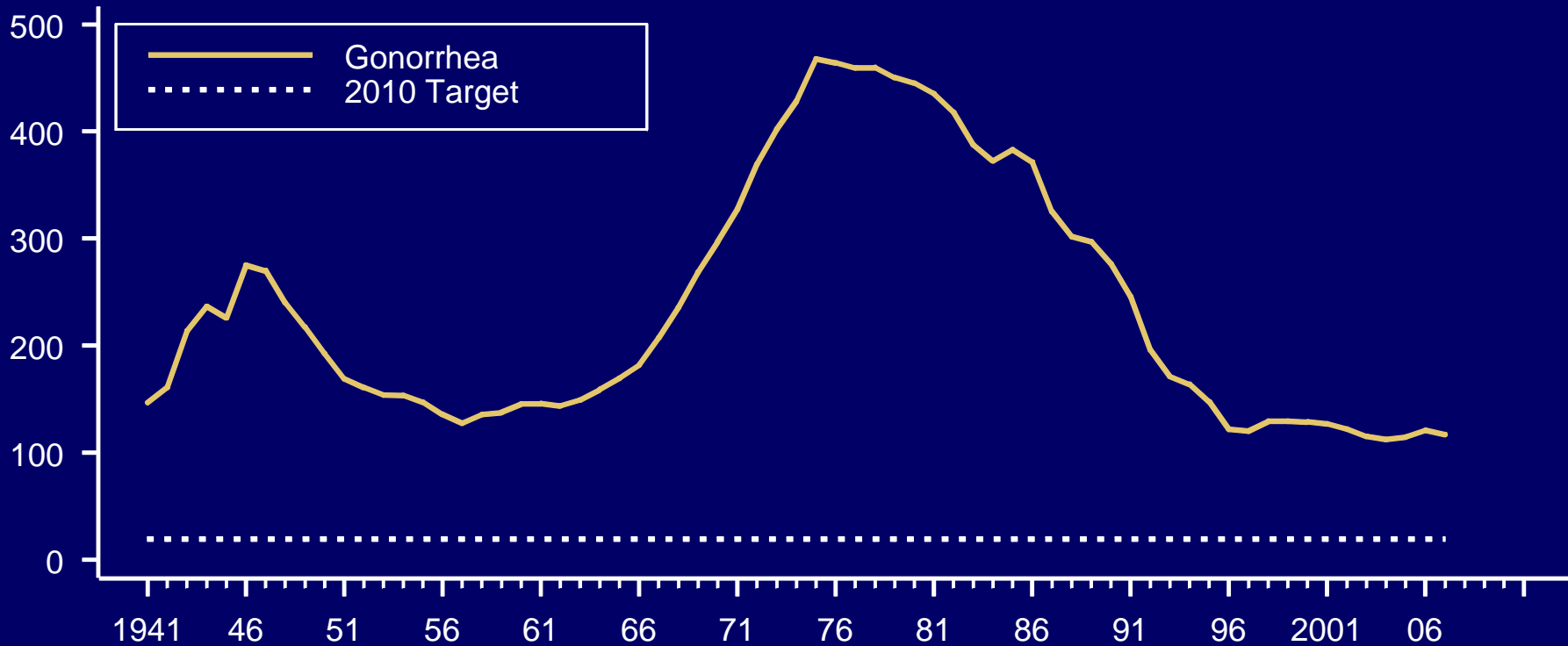
producer: martin g. kugell
composer: jeff fortgang
art: randy henniker



WHY GONORRHEA?

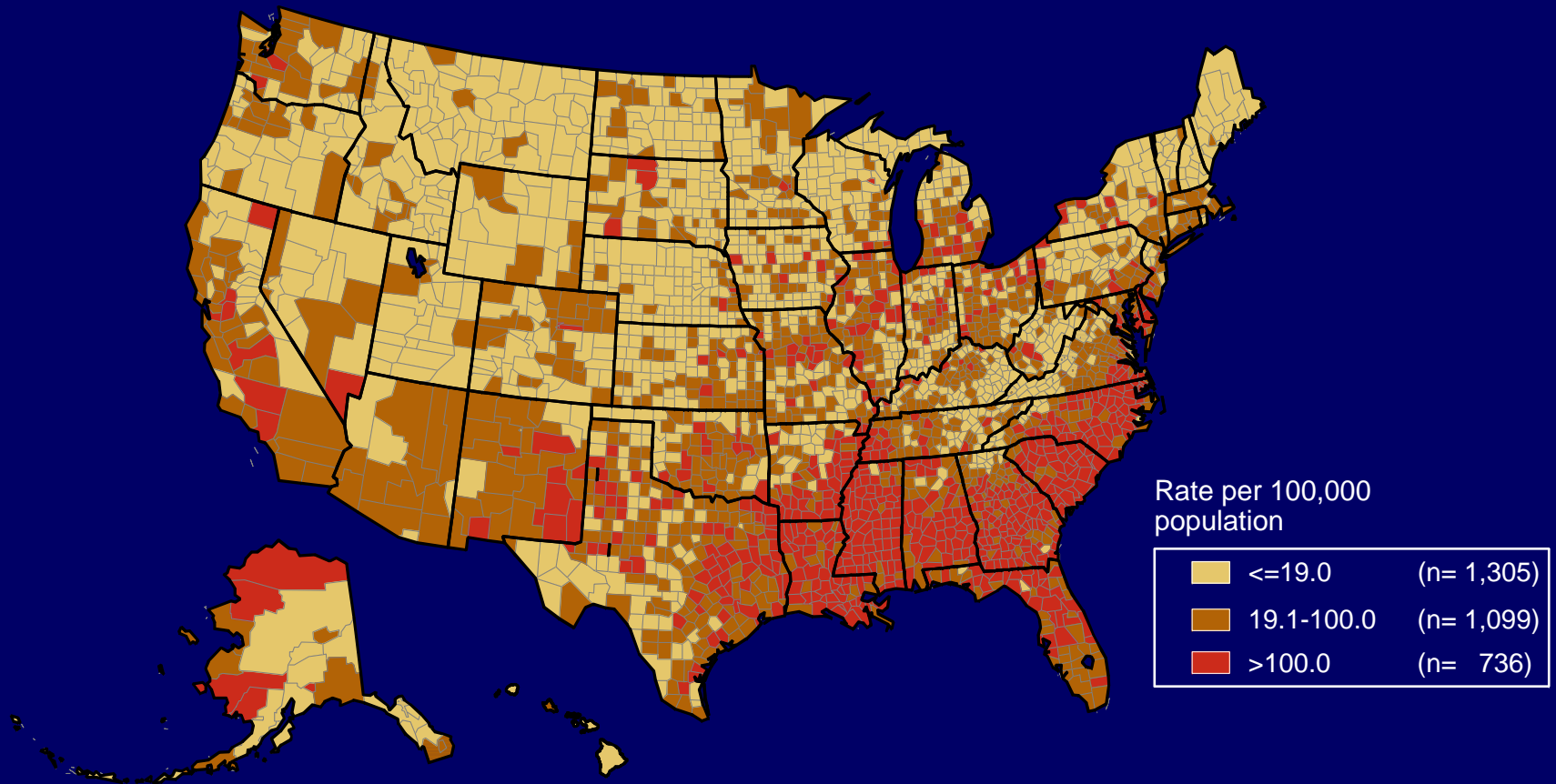
Gonorrhea rates, U.S., 1941-2007*

Rate (per 100,000 population)



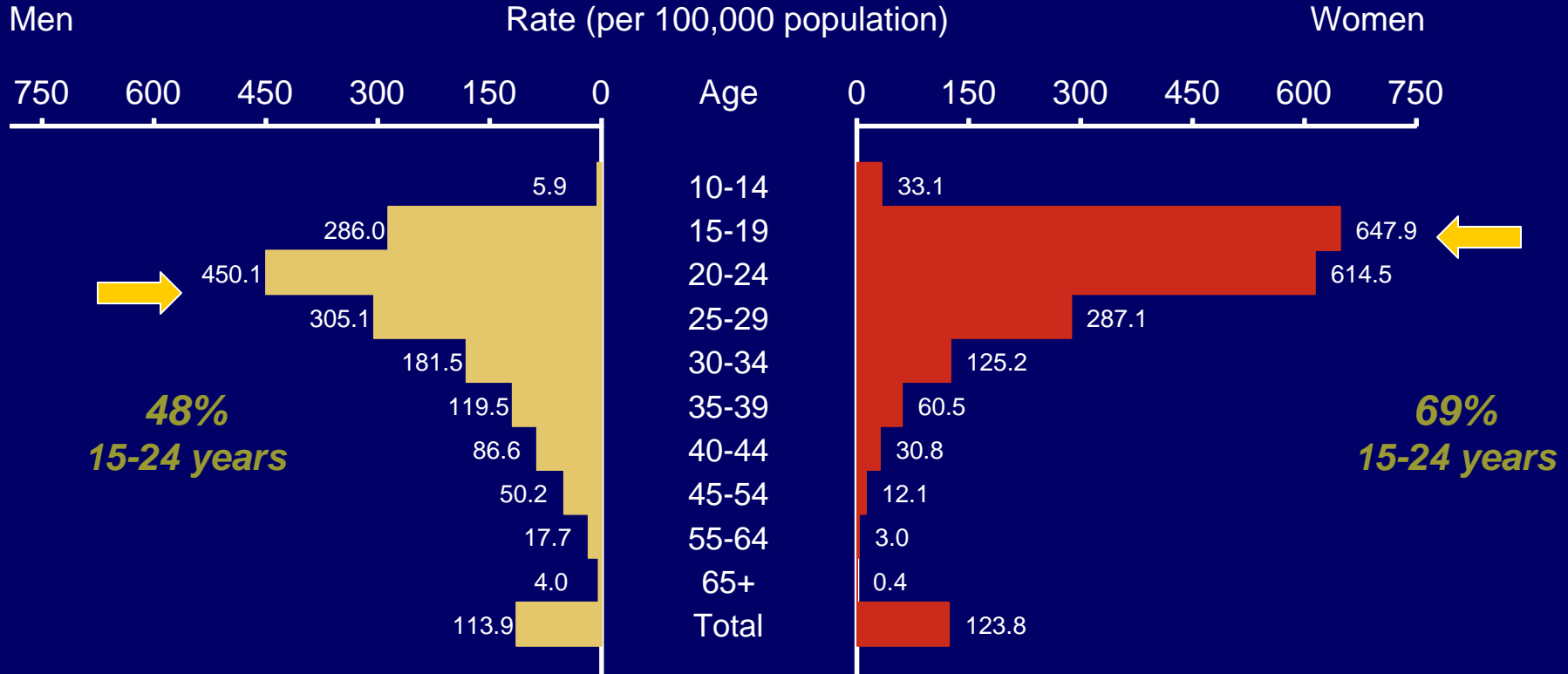
*Preliminary 2007 data

Gonorrhea — Rates by county, 2007



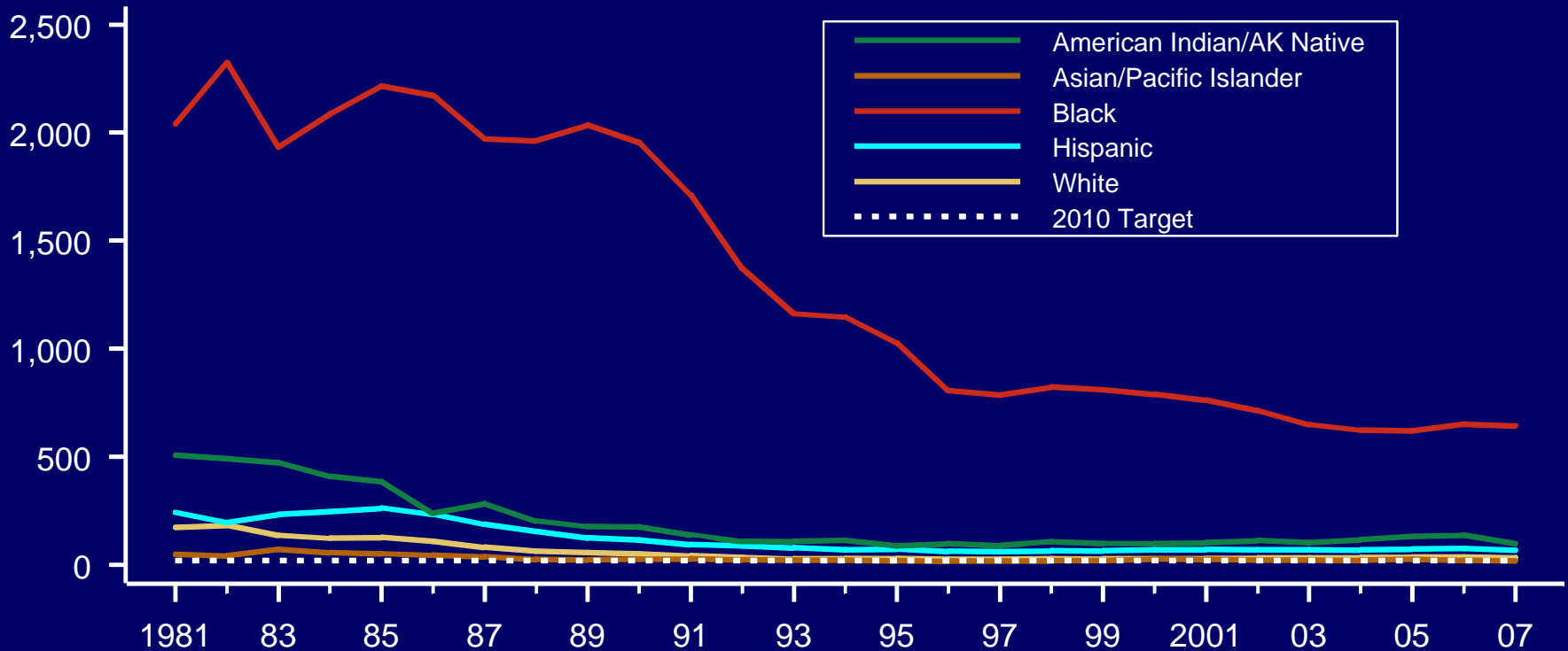
Note: The Healthy People 2010 target for gonorrhea is 19.0 cases per 100,000 population.

Gonorrhea rates by age and sex, 2007



Gonorrhea rates by race/ethnicity, 1981-2007*

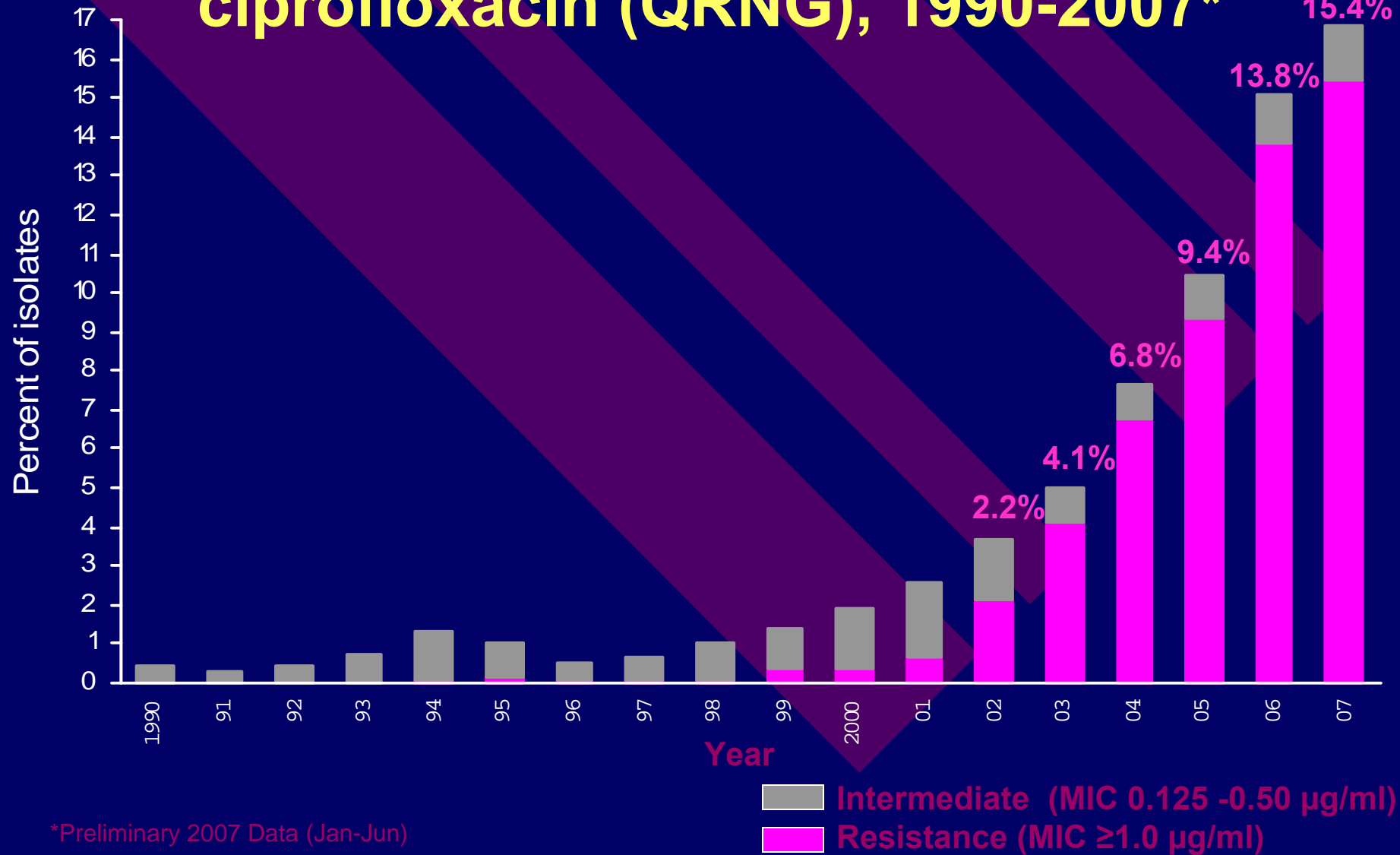
Rate (per 100,000 population)



*Preliminary 2007 data



Percentage of isolates from GISP with intermediate resistance or resistance to ciprofloxacin (QRNG), 1990-2007*



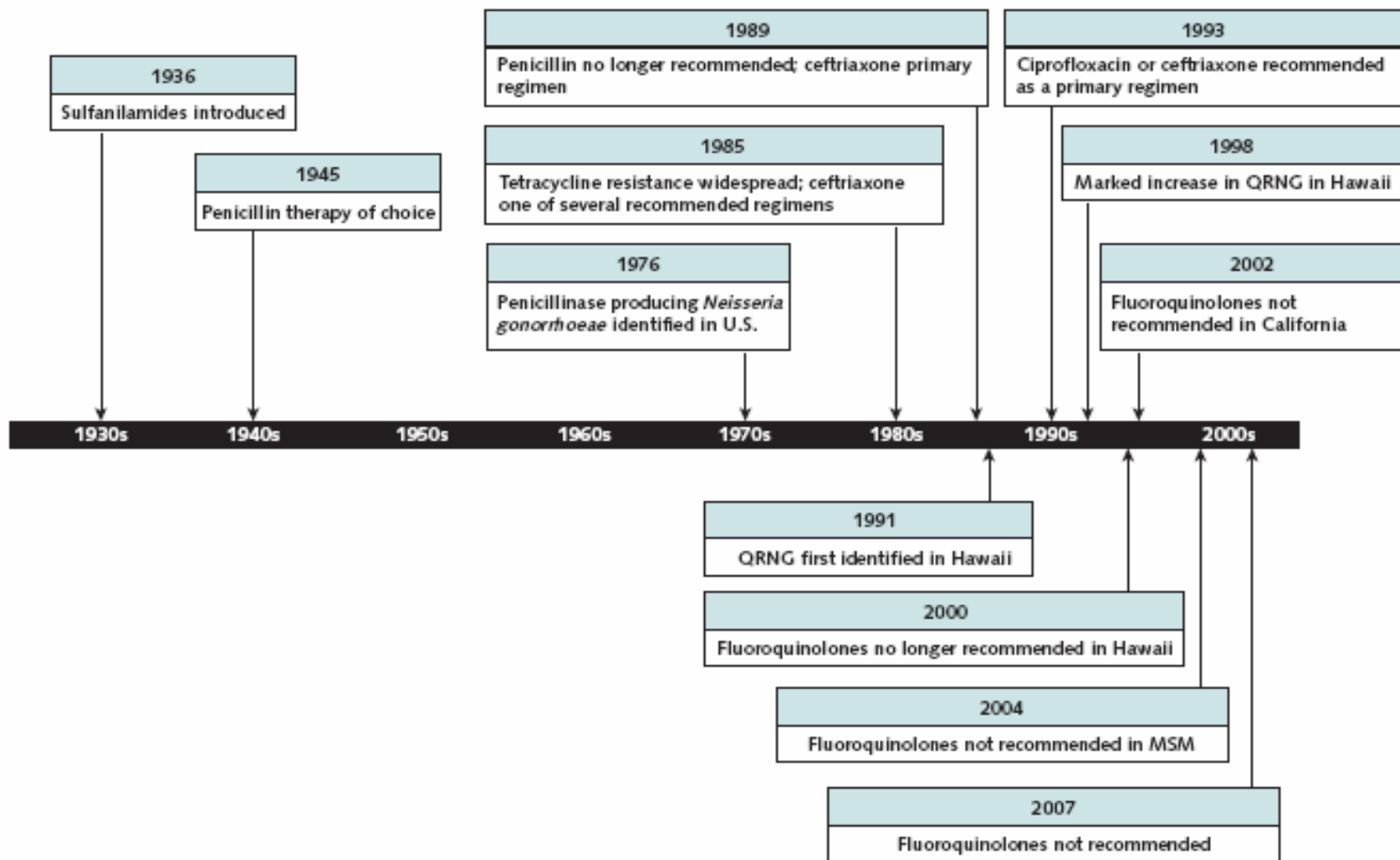
*Preliminary 2007 Data (Jan-Jun)

Resistance to Cephalosporins

- Oral Cephalosporins (Cefixime et al)
 - » 2% Treatment Failure
 - All had Mosaic PBP2
 - » Increasing MICs since 2003
 - » Increasing number of GC strains with decreased susceptibility (GISP- CA and IL)
 - » Continued spread of Mosaic PBP2 antibiotic site
 - 10% Isolates in San Francisco are mosaic PBP2

- Injectable Cephalosporins (Ceftriaxone)
 - » No documented treatment failures to date
 - » Increasing MICs since 2003
 - » Recommended treatment doses increasing

Emergence of Gonococcal Antimicrobial Resistance in the U.S.



QRNG = quinolone-resistant *Neisseria gonorrhoeae*, MSM = men who have sex with men.

After Workowsky et al, 2008



Future [?]

- Oral Cephalosporins
- Injectable Cephalosporins
 - » ? Acquisition of Cephalosporinase ?
- Penems
 - 4th generation penicillins
 - » Promising *in vitro*; some *in vivo* toxicity
- Combination Therapy
 - Phase I Clinical Trial:
 - » Gentamycin and Azithromycin (2 grams)
- New Drugs

Ongoing Activities and Plans: Complementary Elements Division's GC Resistance Project

- Continued support for GISP
- Enhance surveillance in the Far East with WHO
 - » GC AR Activities in WPR and SEAR
 - » Extensive data sharing
 - » Global GC AR Meeting 2010
- Outbreak response plan development
 - » Consultation Atlanta September 14-15
 - » State-level Outbreak Response Plan Development and Pilots
 - California, Hawaii, Illinois, New York State and Washington state
- Basic research to develop a molecular test that could indicate resistance in NAAT-positive specimens

Regional Gonorrhea Meetings

- Regions I, III, IV and X
 - 40 % of all Project Areas
 - 40 % of all reported GC morbidity 2007

- GC Action Plans
 - » Priority Populations
 - » Screening
 - » Access to Care and Treatment
 - » Partner Services
 - » Community Engagement
 - » Medical Providers
 - » Health Education and Risk Reduction
 - » Additional Data Analysis

Priority Populations

- All 15-19 year olds- 2 project areas
- 15-24 African-Americans with a geographic target- 2
- 15-24 African-American males and/or females- 10
- 15-29 African-Americans- 2
- All African-Americans- 2
- All 15-24 with a geographic target- 2
- All Cases- 2
- All 20-24 year old AI/AN- 1
- Special Populations- 2
 - » MSM, pregnant women, women with PID

Other GC Activities

- Shifting resources from low to higher positivity sites
- Collaboration with CHC
- Screening coverage assessment
- Correctional outreach
- Educate providers
- Assess prevalence by provider
 - » Partner with all labs for access to denominator data
- Partner Services expansion
- Continued Epi and data Analysis
- Community Engagement
 - » dept of minority affairs
- Remain cost-neutral

GC Meetings

Summary of Needs

■ Programmatic Challenges

- » Lack of Staff, Funding, Operational and Laboratory capacity
- » Disinterested Partners
- » Stigma
- » Legal limbo of EPT
- » Competing Priorities (HIV, syphilis)
- » Lack of Comprehensive Sex Education
- » Antibiotic resistance

2010 IPP Applications

<i>Parameter</i>	%
GC calculation in the budget section	58
GC calculation in the narrative only	21
Correct Calculation	52
Appropriate Action Plans	31
Dual-test as “targeting”	58

Questions?