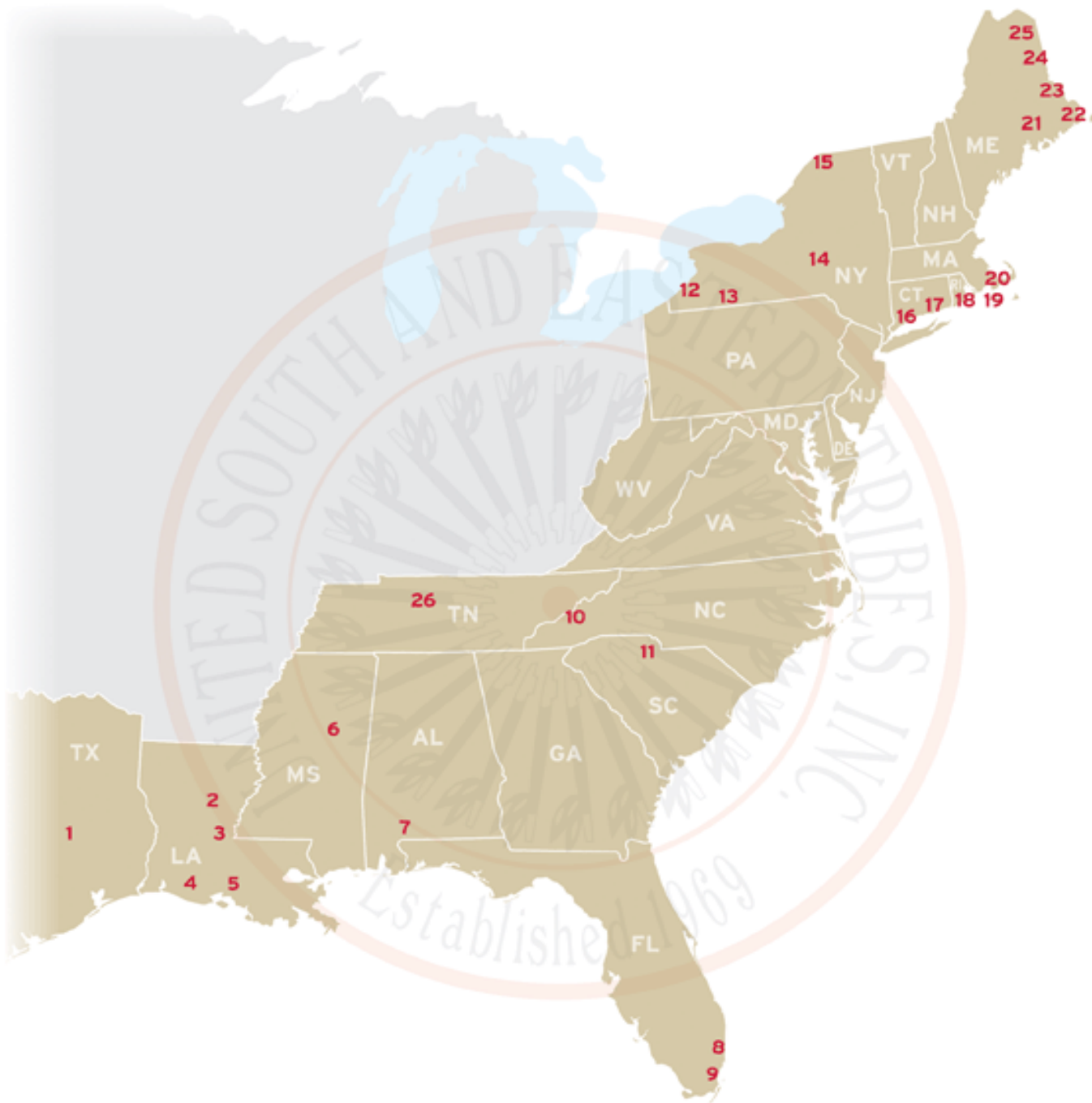


# United South and Eastern Tribes: Gonorrhea and Chlamydia Overview

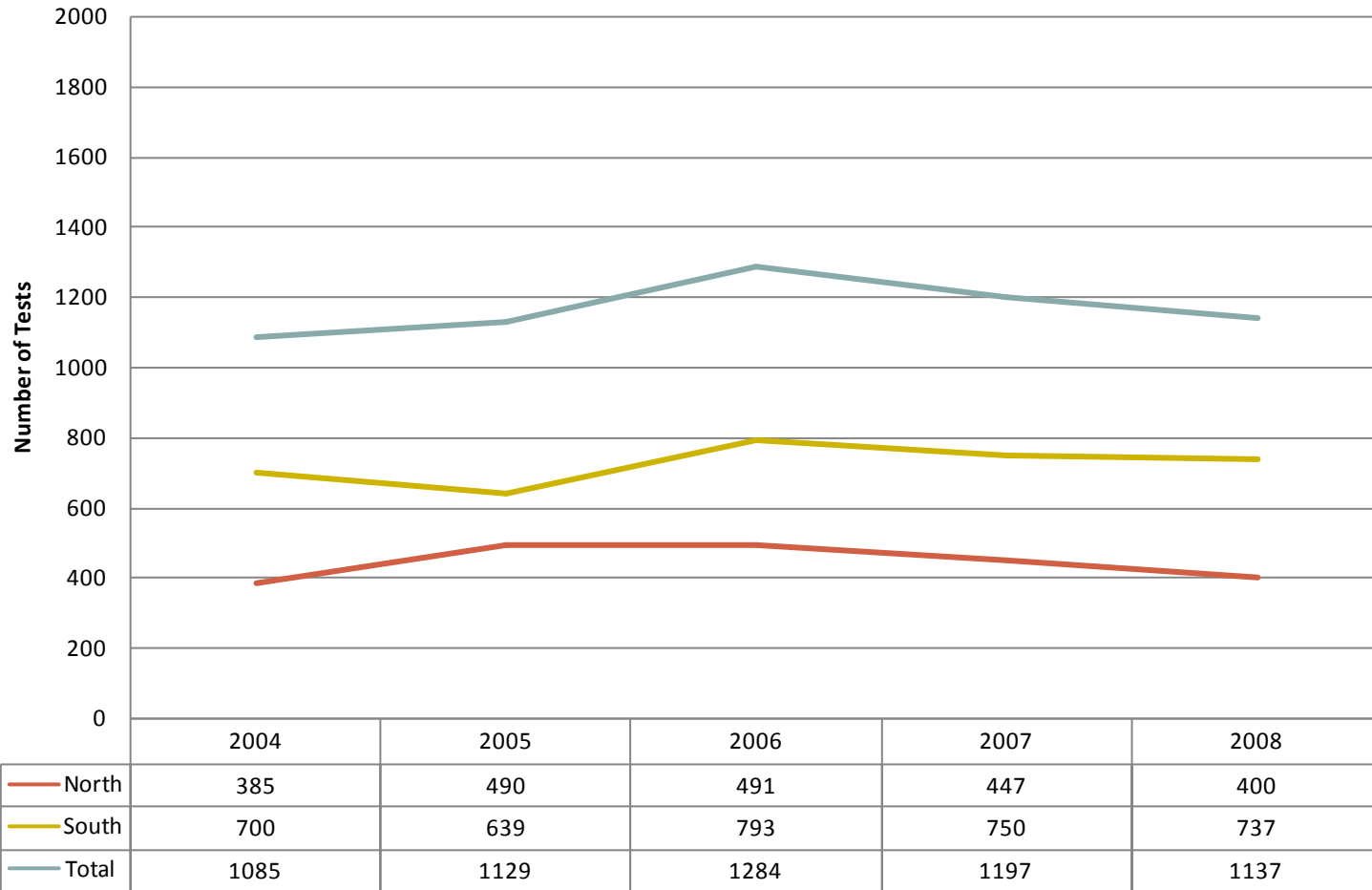
Chris Compher  
Tribal Epidemiology Center  
United South and Eastern Tribes  
**Region IV Infertility Prevention Project**  
May 6, 2010



- 1 Alabama-Coushatta Tribe of Texas  
Livingston, Texas
- 2 Jena Band of Choctaw Indians  
Jena, Louisiana
- 3 Tunica-Biloxi Tribe of Louisiana  
Marksville, Louisiana
- 4 Coushatta Tribe of Louisiana  
Elton, Louisiana
- 5 Chitimacha Tribe of Louisiana  
Charenton, Louisiana
- 6 Mississippi Band of Choctaw Indians  
Choctaw, Mississippi
- 7 Poarch Band of Creek Indians  
Atmore, Alabama
- 8 Seminole Tribe of Florida  
Hollywood, Florida
- 9 Miccosukee Tribe of Indians of Florida  
Miami, Florida
- 10 Eastern Band of Cherokee Indians  
Cherokee, North Carolina
- 11 Catawba Indian Nation  
Rock Hill, South Carolina
- 12 Cayuga Nation  
Versailles, New York
- 13 Seneca Nation of Indians  
Salamanca, New York
- 14 Oneida Indian Nation  
Verona, New York
- 15 St. Regis Mohawk Tribe  
Hogansburg, New York
- 16 The Mohegan Tribe  
Uncasville, Connecticut
- 17 Mashantucket Pequot Tribal Nation  
Mashantucket, Connecticut
- 18 Narragansett Indian Tribe  
Charlestown, Rhode Island
- 19 Wampanoag Tribe of Gay Head (Aquinnah)  
Aquinnah, Massachusetts
- 20 Mashpee Wampanoag Tribe  
Mashpee, Massachusetts
- 21 Penobscot Indian Nation  
Indian Island, Maine
- 22 Passamaquoddy Tribe-Pleasant Point  
Perry, Maine
- 23 Passamaquoddy Tribe-Indian Township  
Princeton, Maine
- 24 Houlton Band of Maliseet Indians  
Littleton, Maine
- 25 Aroostook Band of Micmacs  
Presque Isle, Maine
- 26 USET  
Nashville, Tennessee



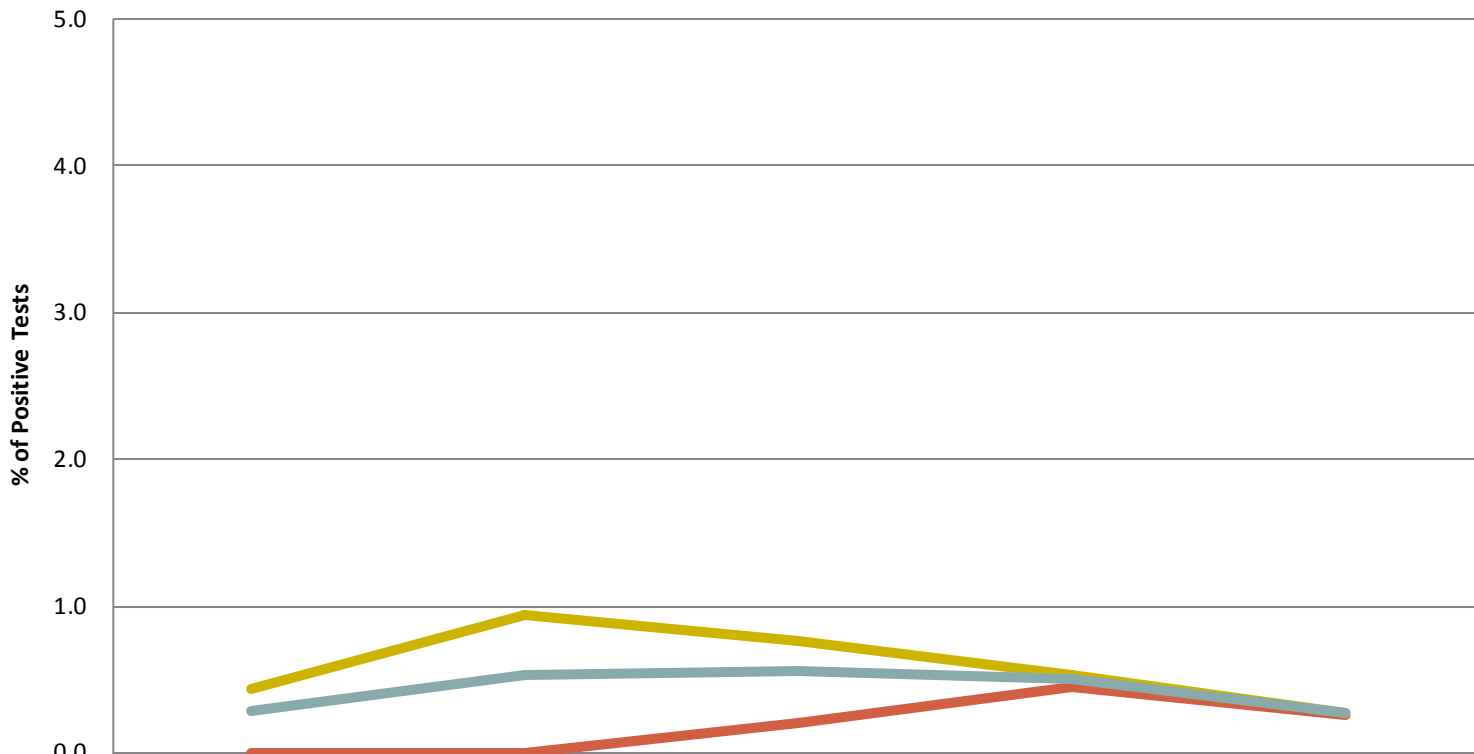
## Number of Gonorrhea Tests Among Nashville Area Tribes 2004-2008



Data Sources: Tribal electronic patient management system.

Notes: North Region includes Maine, Massachusetts, New York, Rhode Island, Connecticut. South Region includes Alabama, Florida, Louisiana, Mississippi, North Carolina, South Carolina, Texas.

## Percentage of + Gonorrhea Tests Among Nashville Area Tribes 2004-2008

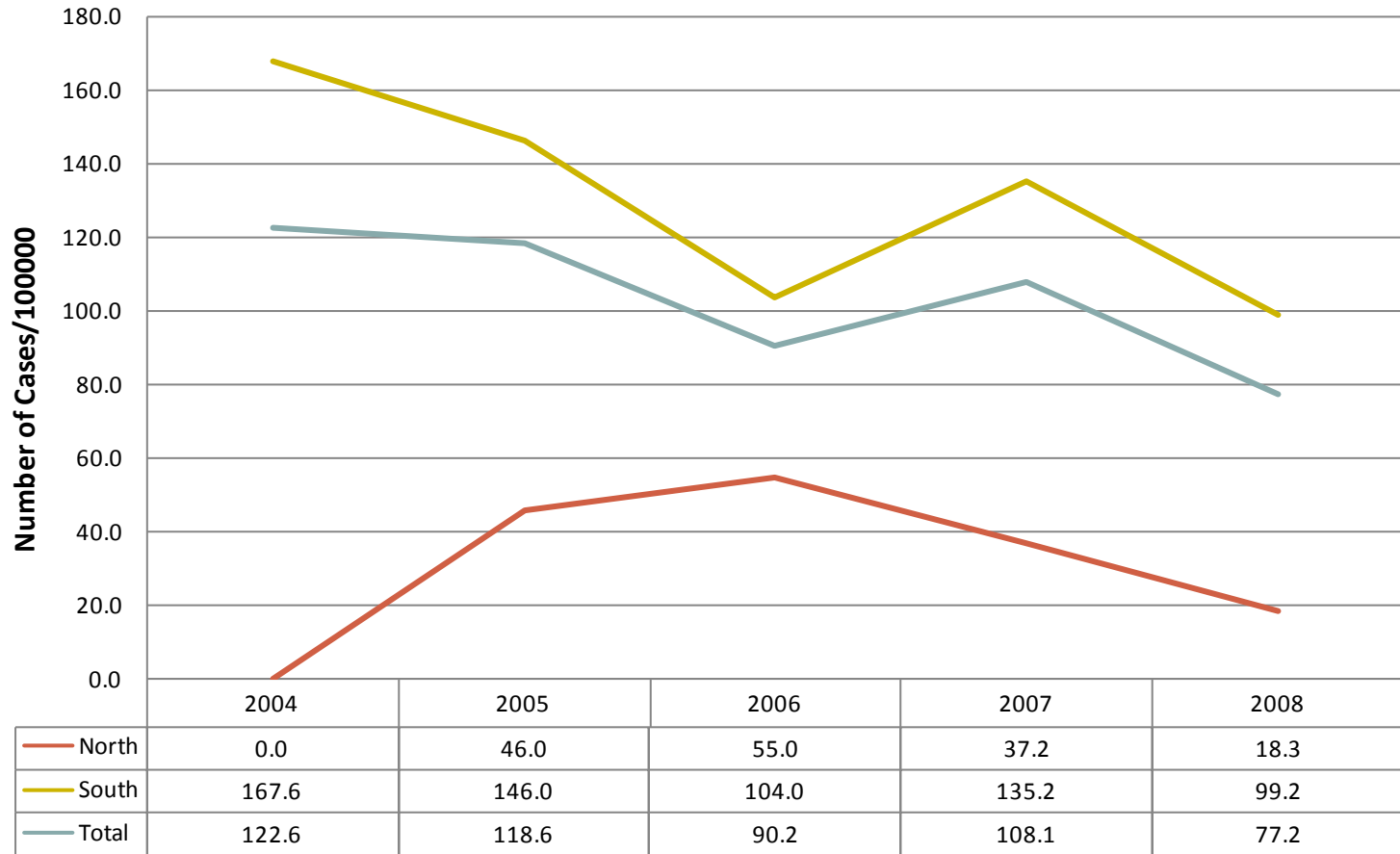


	2004	2005	2006	2007	2008
North	0	0	0.2	0.45	0.25
South	0.43	0.94	0.76	0.53	0.27
Total	0.28	0.53	0.55	0.5	0.26

Data Sources: Tribal electronic patient management system.

Notes: North Region includes Maine, Massachusetts, New York, Rhode Island, Connecticut. South Region includes Alabama, Florida, Louisiana, Mississippi, North Carolina, South Carolina, Texas.

# Number of Gonorrhea Cases Among Nashville Area Tribes 2004-2008

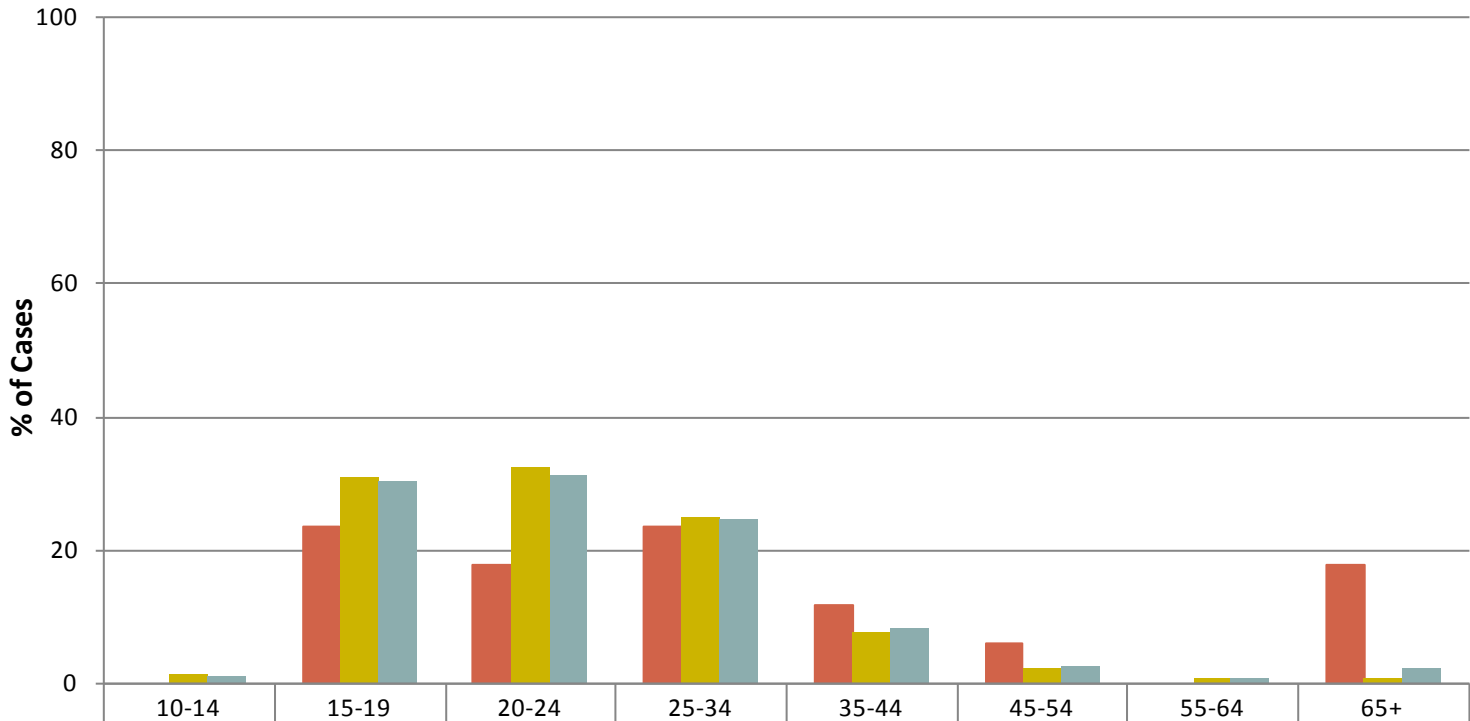


Data Sources: Tribal electronic patient management system.

Notes: North Region includes Maine, Massachusetts, New York, Rhode Island, Connecticut. South Region includes Alabama, Florida, Louisiana, Mississippi, North Carolina, South Carolina, Texas.



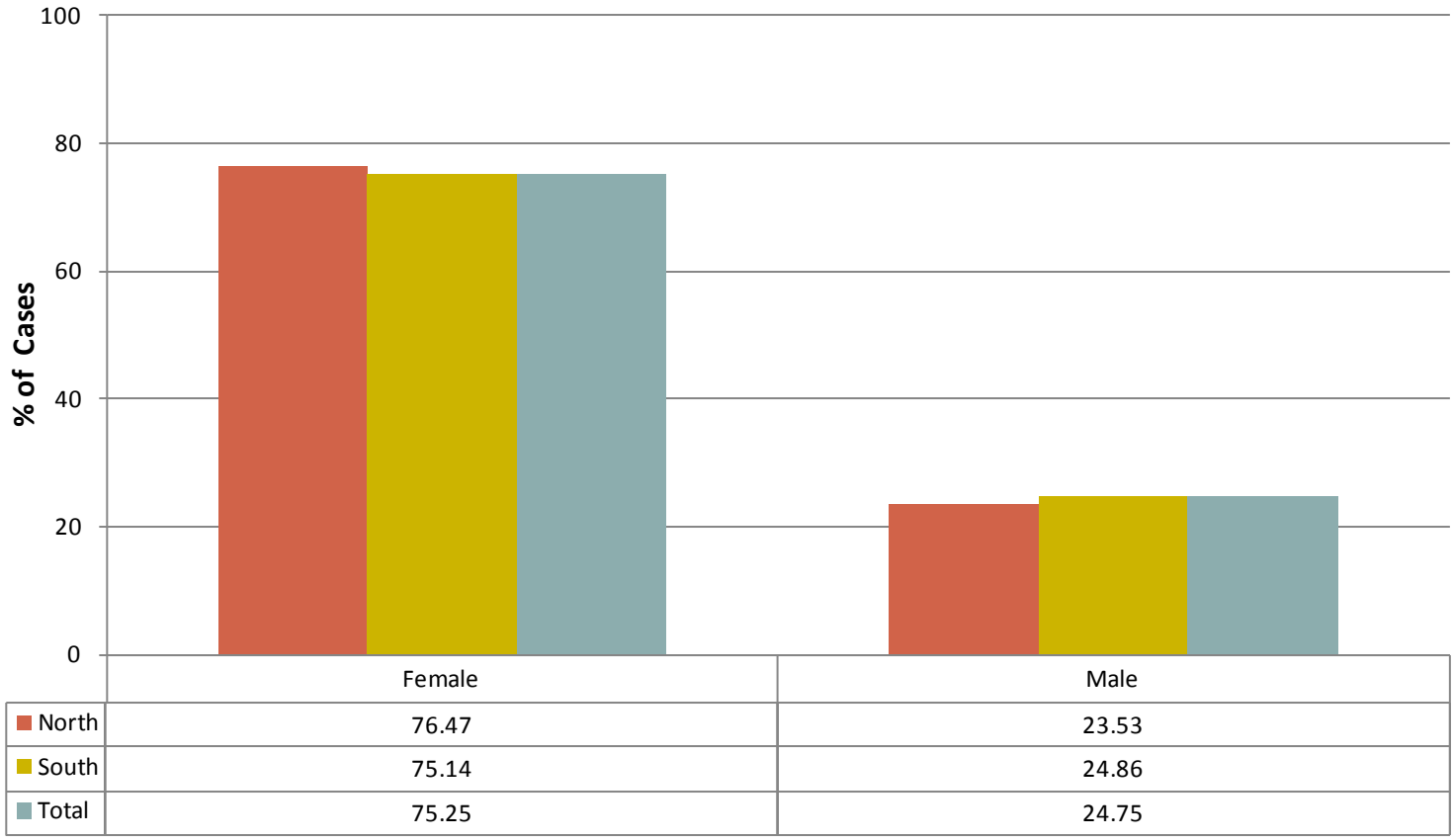
# Age Distribution of Gonorrhea Cases Among Nashville Area Tribes 2004-2008



North	0	23.53	17.65	23.53	11.76	5.88	0	17.65
South	1.1	30.77	32.42	24.73	7.69	2.2	0.55	0.55
Total	1.01	30.15	31.16	24.62	8.04	2.51	0.5	2.01

Data Sources: Tribal electronic patient management system.  
 Notes: North Region includes Maine, Massachusetts, New York, Rhode Island, Connecticut. South Region includes Alabama, Florida, Louisiana, Mississippi, North Carolina, South Carolina, Texas.

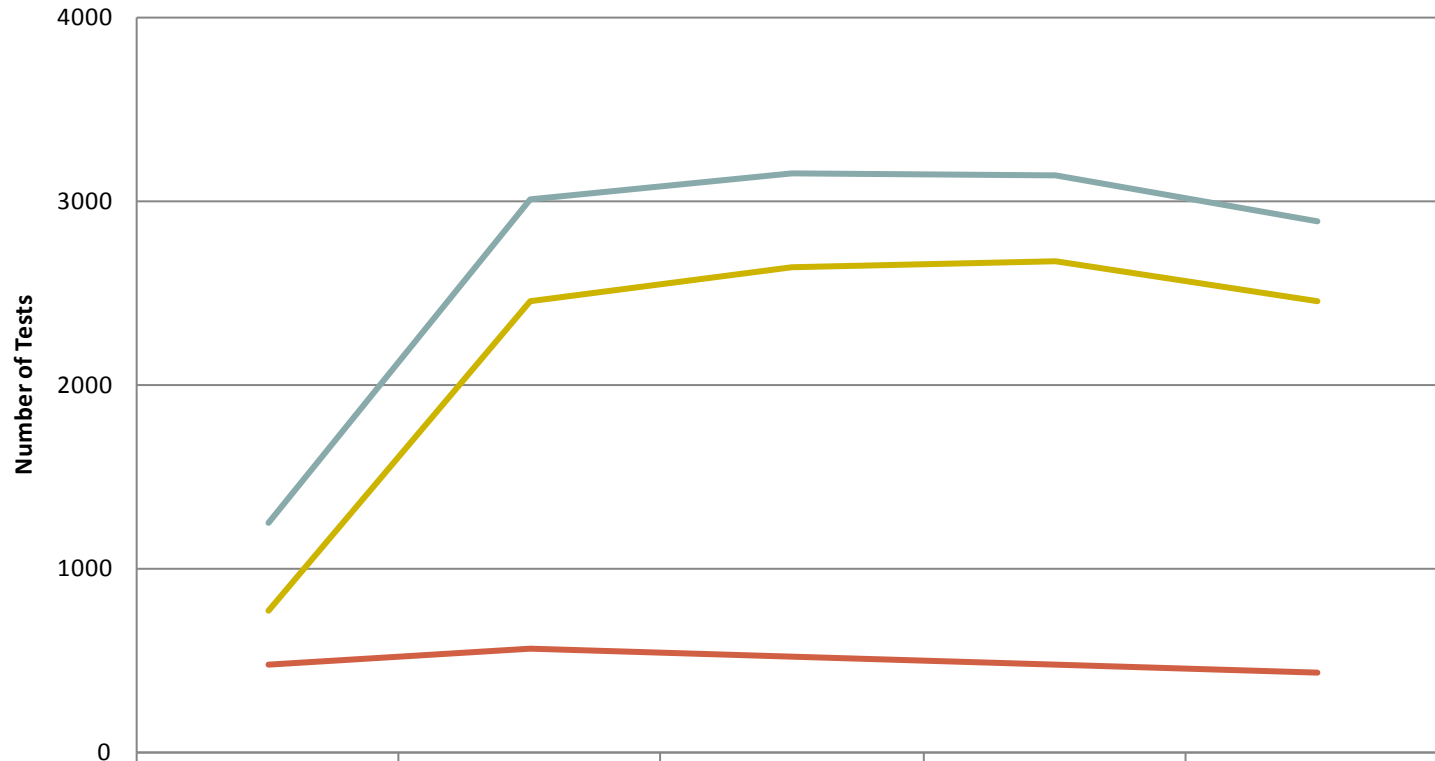
# Gender Distribution of Gonorrhea Cases Among Nashville Area Tribes 2004-2008



Data Sources: Tribal electronic patient management system.

Notes: North Region includes Maine, Massachusetts, New York, Rhode Island, Connecticut. South Region includes Alabama, Florida, Louisiana, Mississippi, North Carolina, South Carolina, Texas.

# Number of Chlamydia Tests Among Nashville Area Tribes 2004-2008

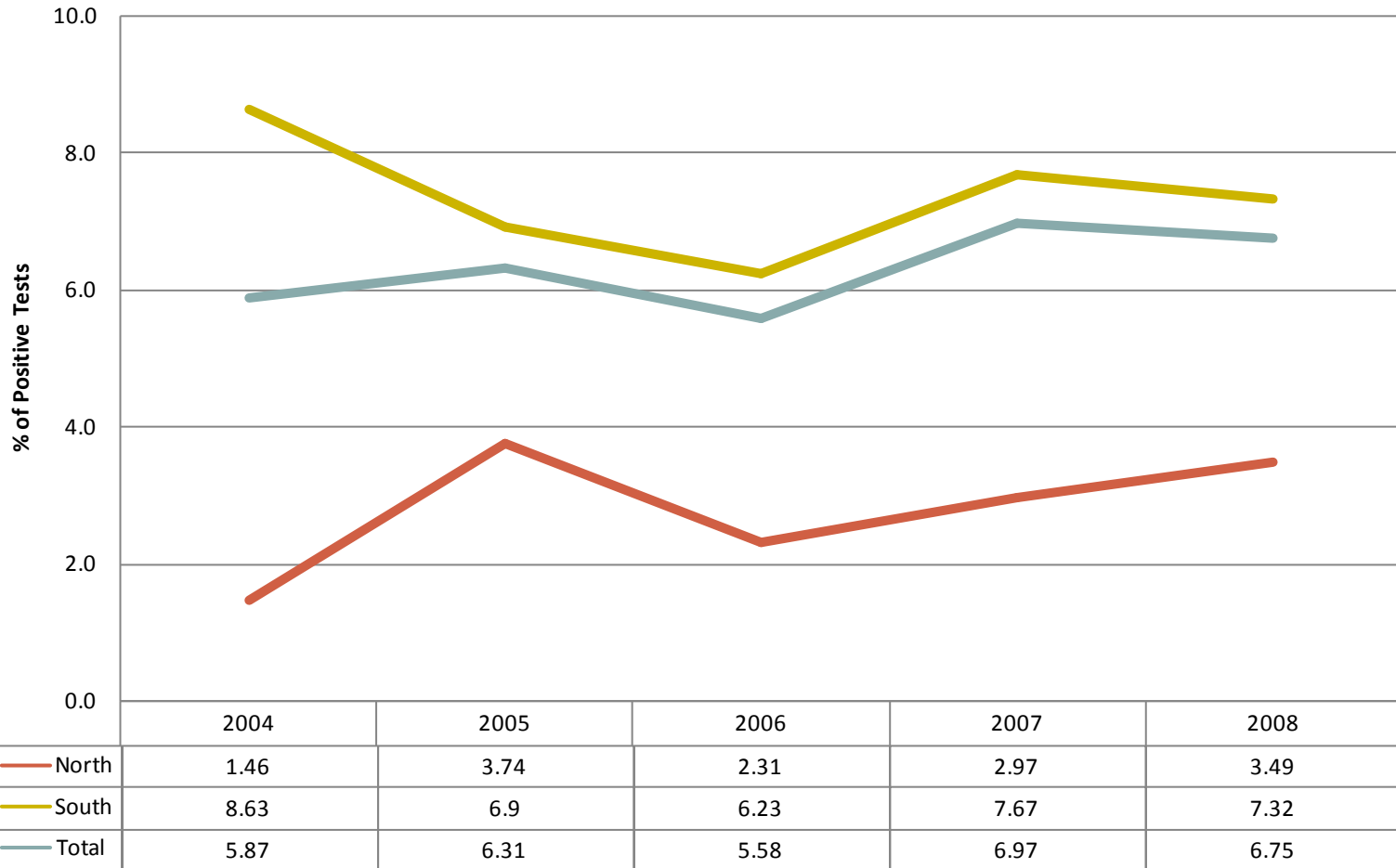


	2004	2005	2006	2007	2008
— North	478	561	519	471	430
— South	765	2450	2634	2672	2459
— Total	1243	3011	3153	3143	2889

Data Sources: Tribal electronic patient management system.

Notes: North Region includes Maine, Massachusetts, New York, Rhode Island, Connecticut. South Region includes Alabama, Florida, Louisiana, Mississippi, North Carolina, South Carolina, Texas.

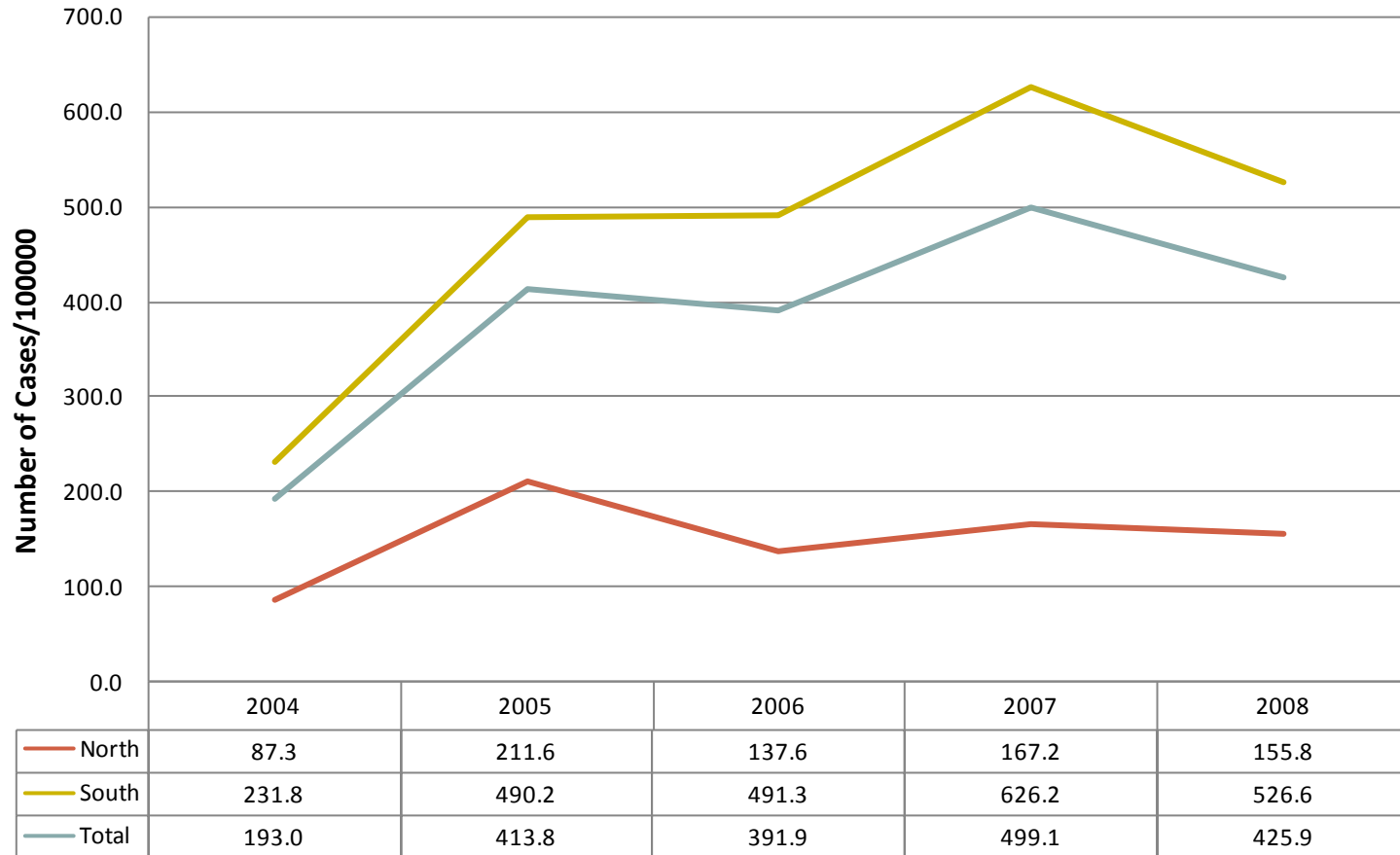
## Percentage of + Chlamydia Tests Among Nashville Area Tribes 2004-2008



Data Sources: Tribal electronic patient management system.

Notes: North Region includes Maine, Massachusetts, New York, Rhode Island, Connecticut. South Region includes Alabama, Florida, Louisiana, Mississippi, North Carolina, South Carolina, Texas.

# Number of Chlamydia Cases Among Nashville Area Tribes 2004-2008

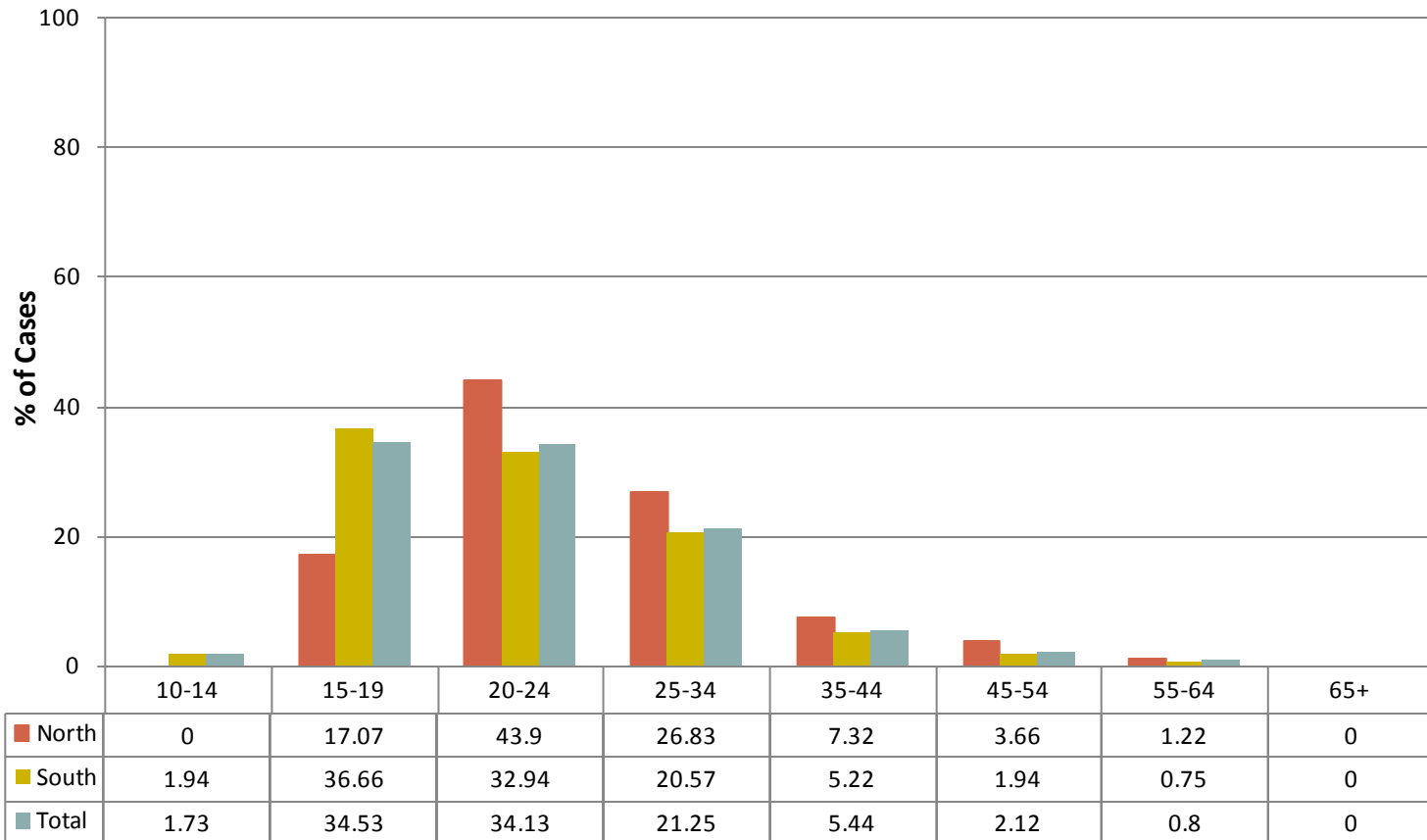


Data Sources: Tribal electronic patient management system.

Notes: North Region includes Maine, Massachusetts, New York, Rhode Island, Connecticut. South Region includes Alabama, Florida, Louisiana, Mississippi, North Carolina, South Carolina, Texas.



## Age Distribution of Chlamydia Cases Among Nashville Area Tribes 2004-2008



Data Sources: Tribal electronic patient management system.

Notes: North Region includes Maine, Massachusetts, New York, Rhode Island, Connecticut. South Region includes Alabama, Florida, Louisiana, Mississippi, North Carolina, South Carolina, Texas.

# Gender Distribution of Chlamydia Cases Among Nashville Area Tribes 2004-2008



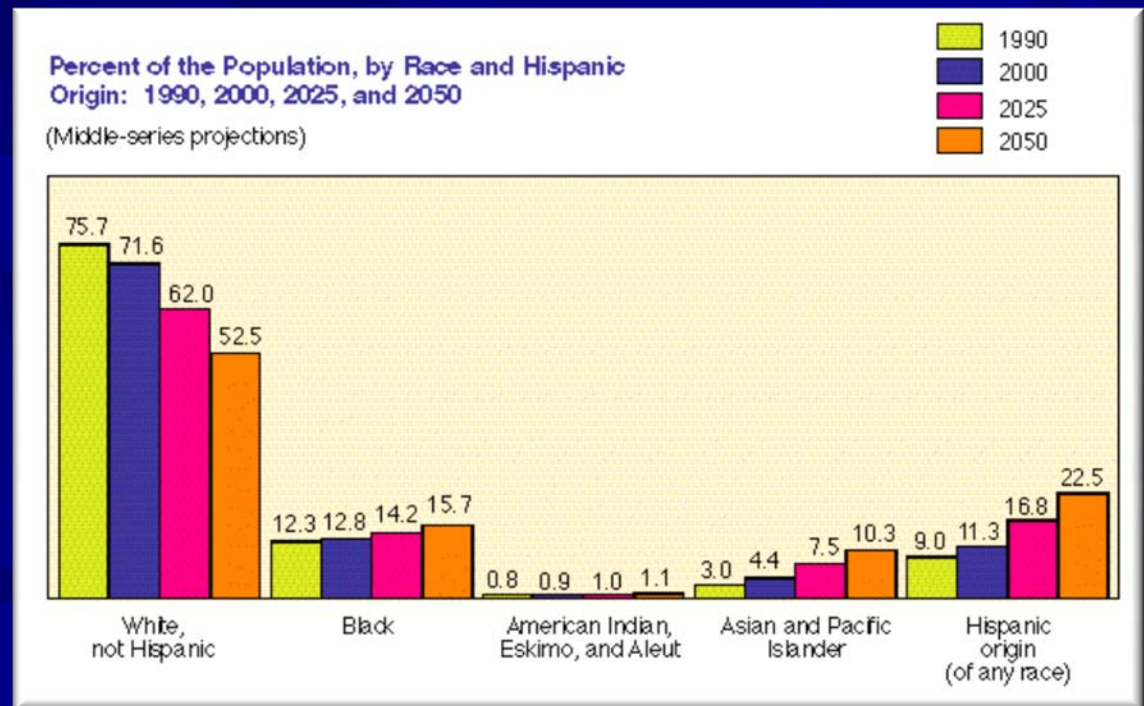
Data Sources: Tribal electronic patient management system.

Notes: North Region includes Maine, Massachusetts, New York, Rhode Island, Connecticut. South Region includes Alabama, Florida, Louisiana, Mississippi, North Carolina, South Carolina, Texas.

# Small Numbers

...make data analysis difficult

...make secondary data difficult to access



# Racial Misclassification

...deflates our actual numbers

**What do you consider your  
race?**



# Lack of Data Sharing

...makes it difficult to access Tribal figures



# Tribal Nation Borders

...federal

do not mirror



...state

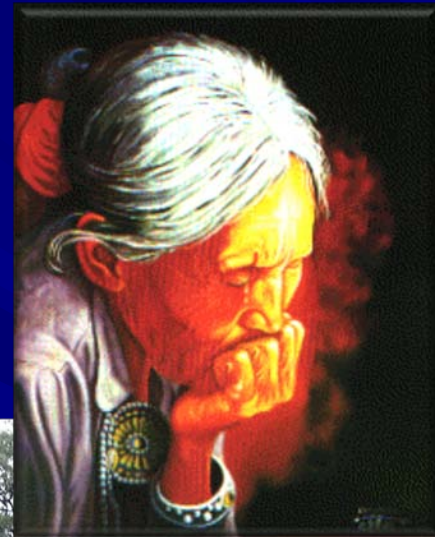


...county



# Social Norms and Values

...can be inhibitive



# Close Knit Communities



...can inflate social stigmas

# Community Insulation



...makes us feel safe and protected

*Thank you!*

Christina Compher, MHS

[ccompher@usetinc.org](mailto:ccompher@usetinc.org)

(615)467-1611