

Region IV IPP

Community-based Participatory Research

Memphis

Tennessee Department of Health
HIV/AIDS/STD Division

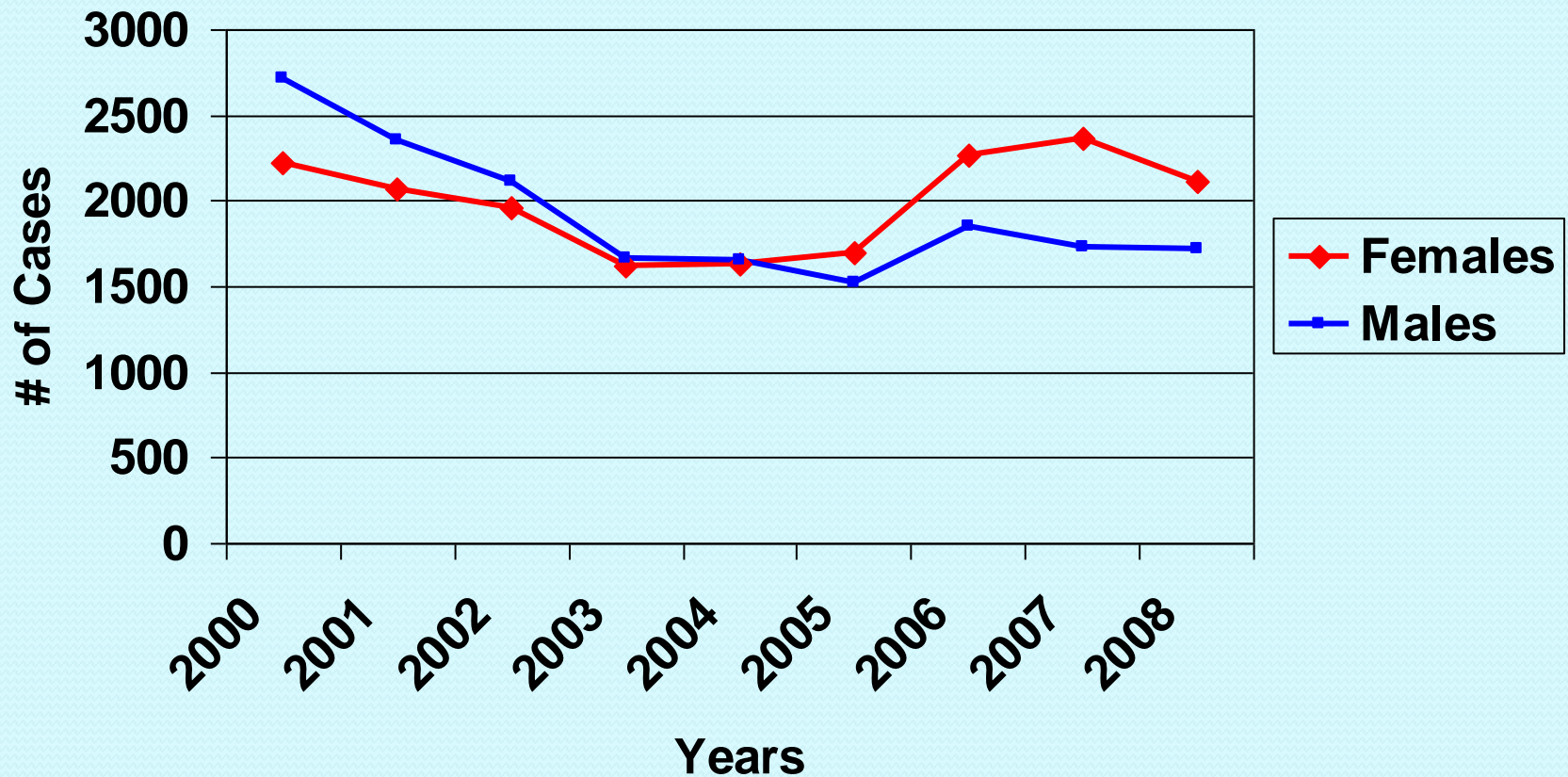
Shelby County Data Overview

- 3,227 GC cases reported to CDC in CY2008 for Shelby County

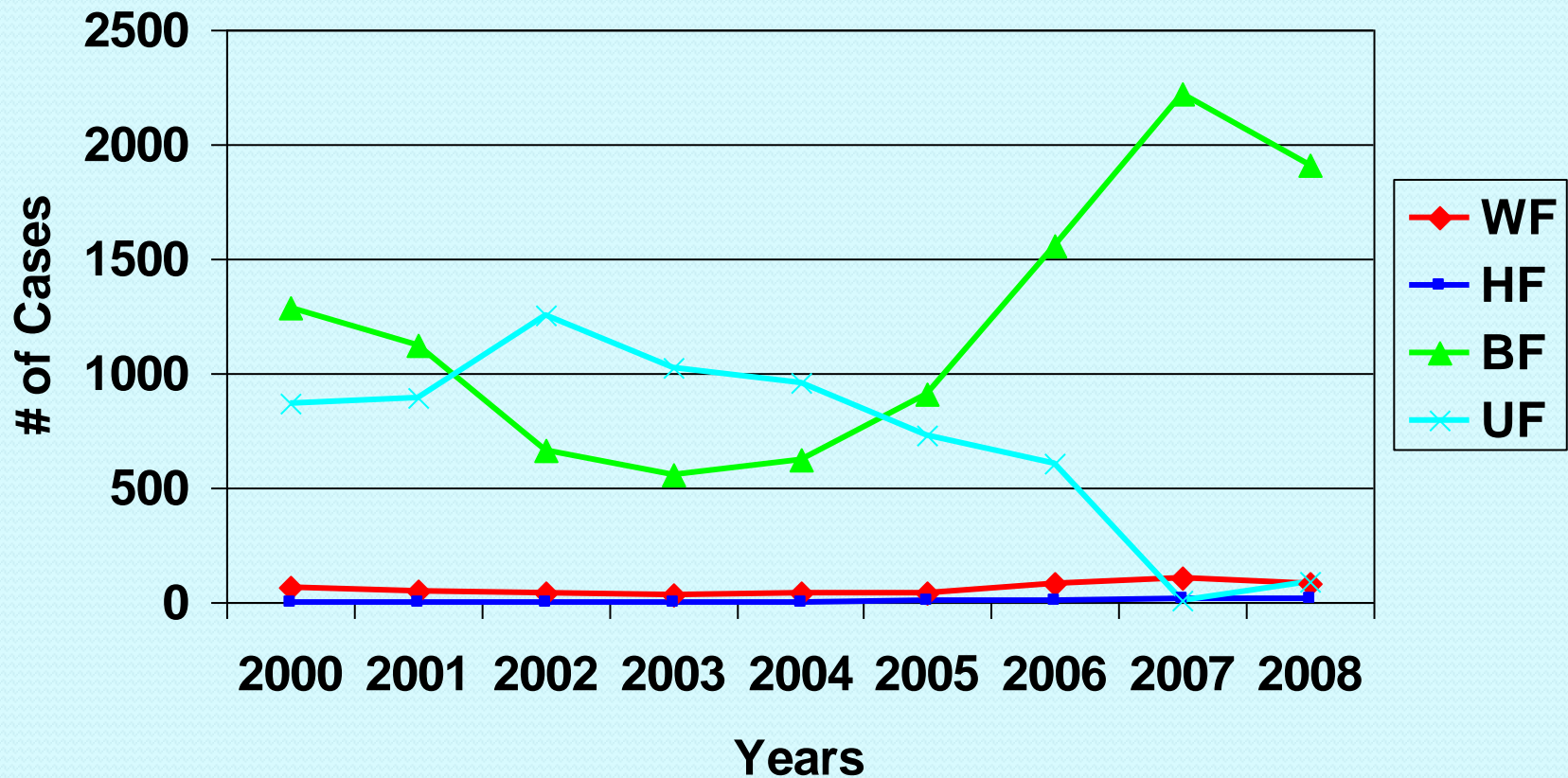


- Represents 37.5% of morbidity statewide for TN (3,227/8,605)
- Shelby County is ranked 12th nationally by case volume by county

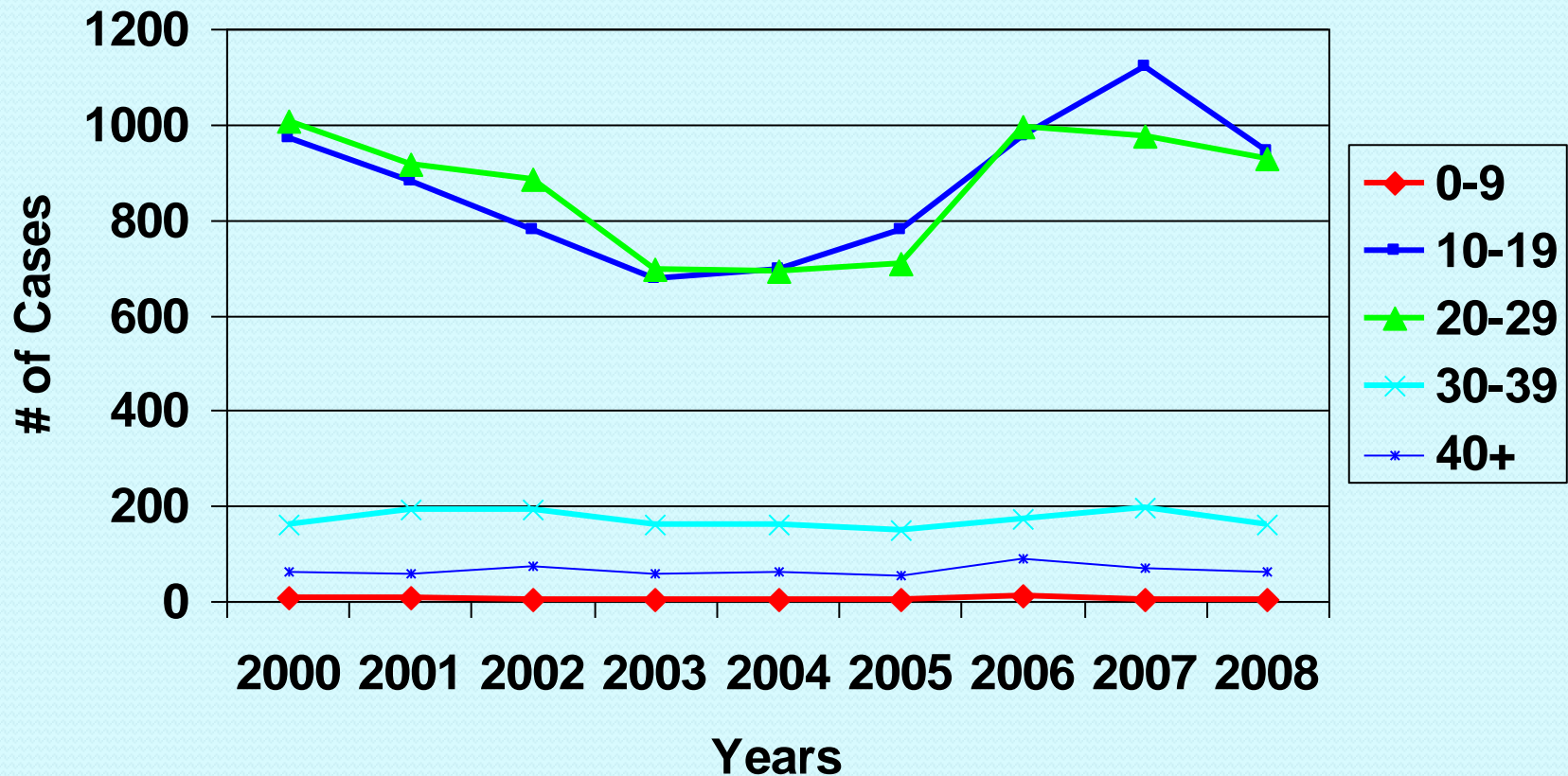
Gonorrhea Trends for Memphis/Shelby 2000-2008 by Gender



Gonorrhea Trends for Memphis/Shelby 2000-2008 Females by Race/Ethnicity



Gonorrhea Trends for Memphis/Shelby 2000-2008 Females by Age Category



Our CBPR Partner: St. Andrew A.M.E. Church – Project Hope

- Project HOPE is an HIV/AIDS Outreach Prevention and Education Program;
- Mission is to provide HIV education to the community in an effort to stop the spread of HIV;
- Project HOPE targets the general community of Memphis, with particular emphasis on African American youth and females of childbearing age;
- Interventions include street and community outreach, and behavior counseling sessions for groups and individuals.



Research Timeline for Proposal

- **January 2010**

Review available Memphis data and census tracts.

Discuss Core Theory and its possible application in Memphis.

- **January – February 2010**

Core Theory researchers from the University of North Carolina work with St. Andrew's.

- **February 2010**

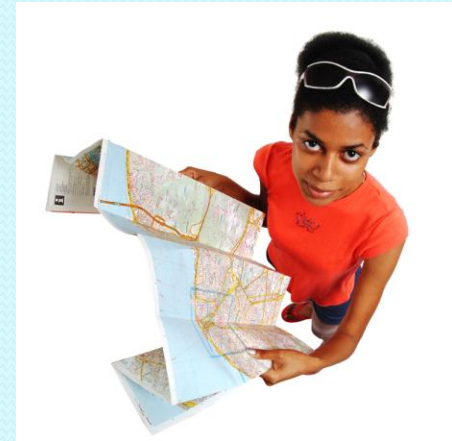
University of North Carolina discusses principles of core theory and potential application in Memphis.

Determine whether additional data or information is needed and next steps for core theory application.

- **March 2010** – Interview with Memphis/Shelby Co. Health Department DIS.

Results of DIS Interview

- Black females, 13 years old and older
- 15 – 25 year old females come in as referrals
- Middle school and high school-aged populations mainly responsible for gonorrhea transmission
- Males don't come in unless they have symptoms
- Gonorrhea morbidity is not clustered in any one geographic area
- DIS do not trace or interview partners





Institutional
Research
Board



Issues



Timeframe



Focus Groups



- Three groups of females 18 – 29 years old
- Three groups of males 18 – 35 years old
- Four key informer interviews

End



Development of strategies to reach our target population

Identify community leaders and engage their support and buy-in

Increase community awareness of gonorrhoea health disparities