

Regional Evaluation Data Progress, Challenges, and Needs

Region IV Infertility Prevention Project – Advisory Board Meeting
Fort Lauderdale, Florida, May 6-7, 2010

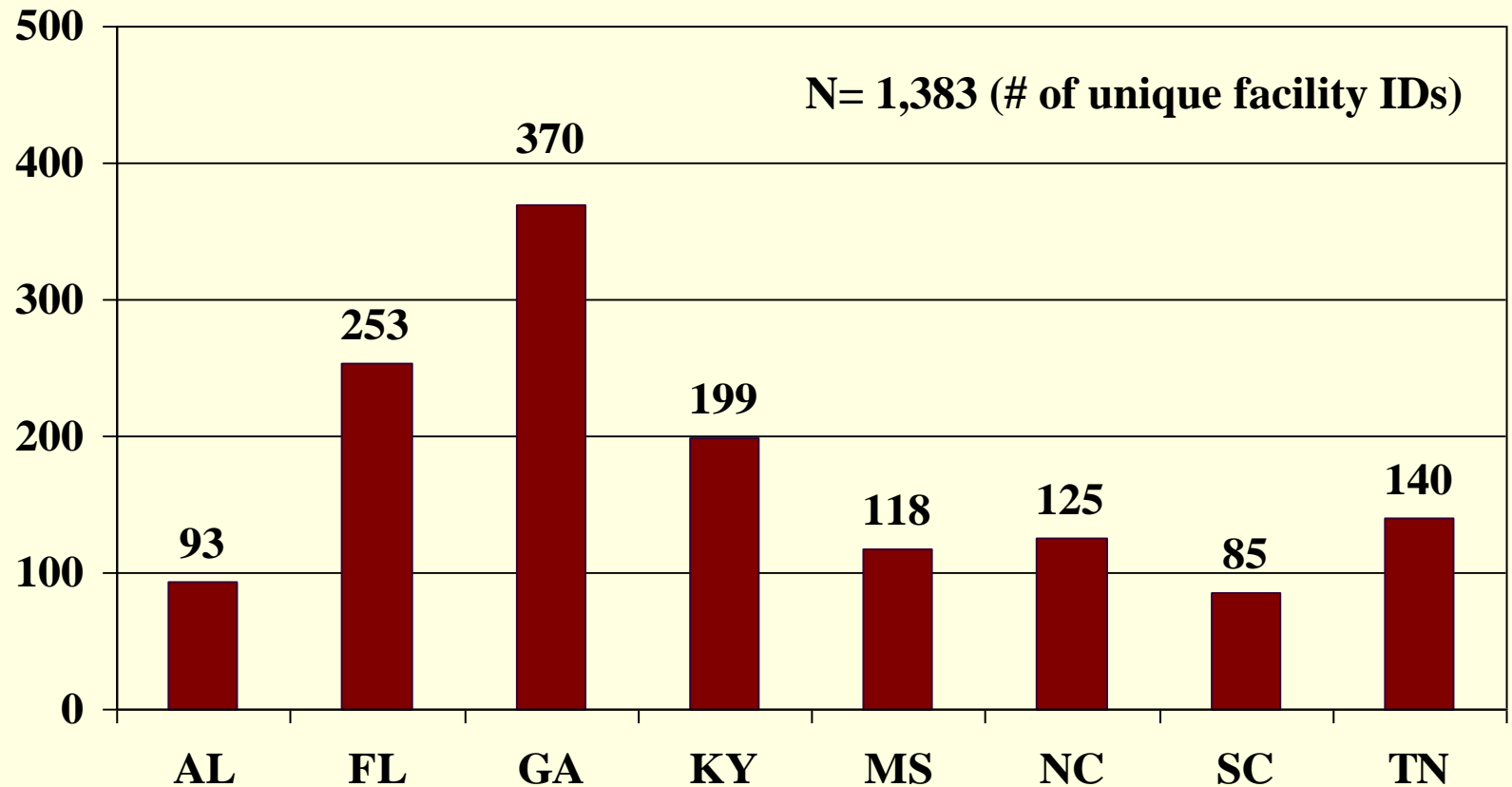
Kelly Morrison Opdyke, MPH
Cicatelli Associates Inc.

kopdyke@cicatelli.org

Overview

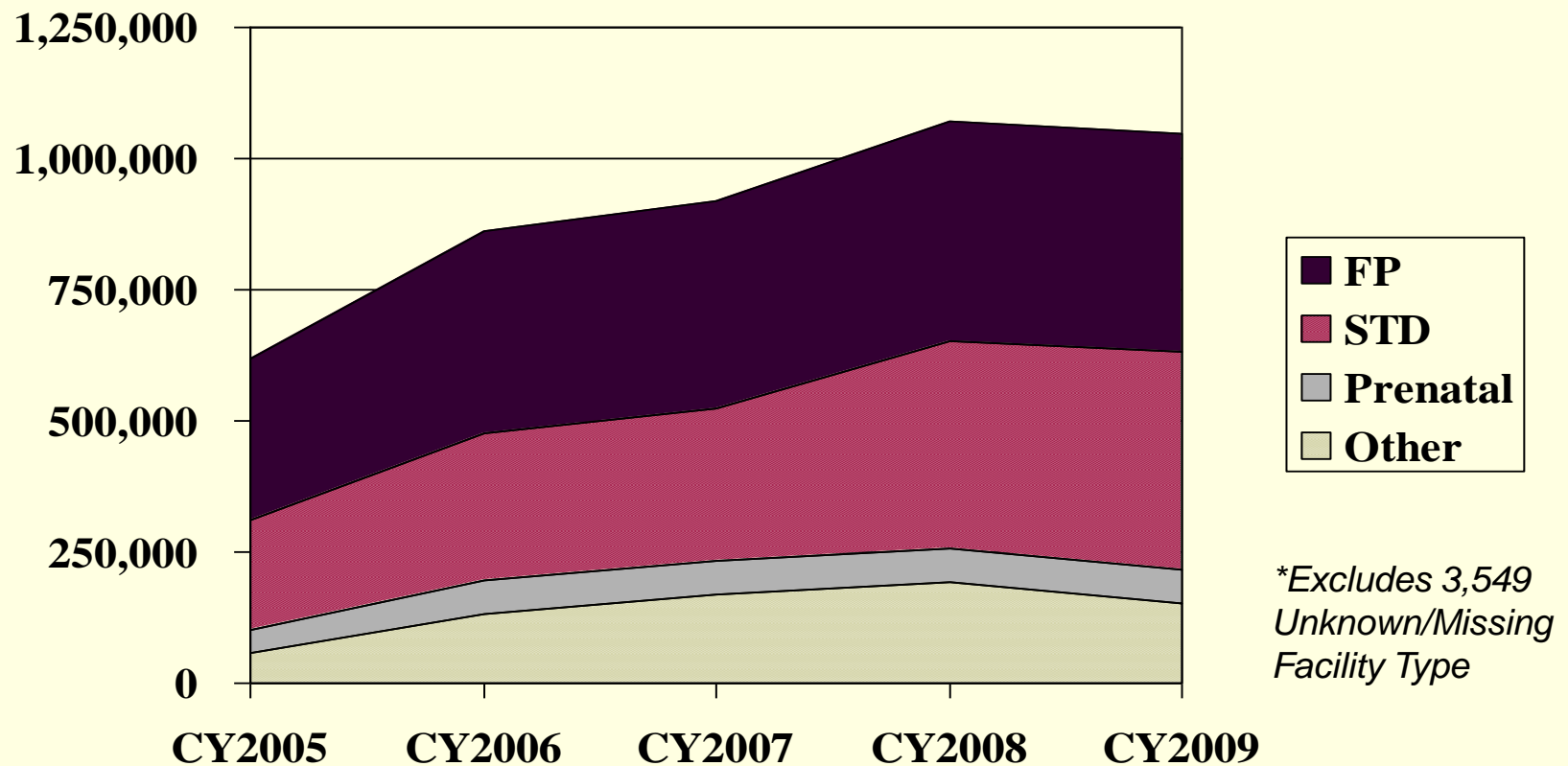
- Region IV IPP Data Trends Highlights
- Reducing Health Disparities
 - GC Action Plan Indicators
- American/Indian Alaska Native Priorities
- Community Health Center Partnerships
- Increasing Screening Coverage
 - Plotting Exercise

Number of Facilities Reporting to Region IV IPP in CY2009, by State



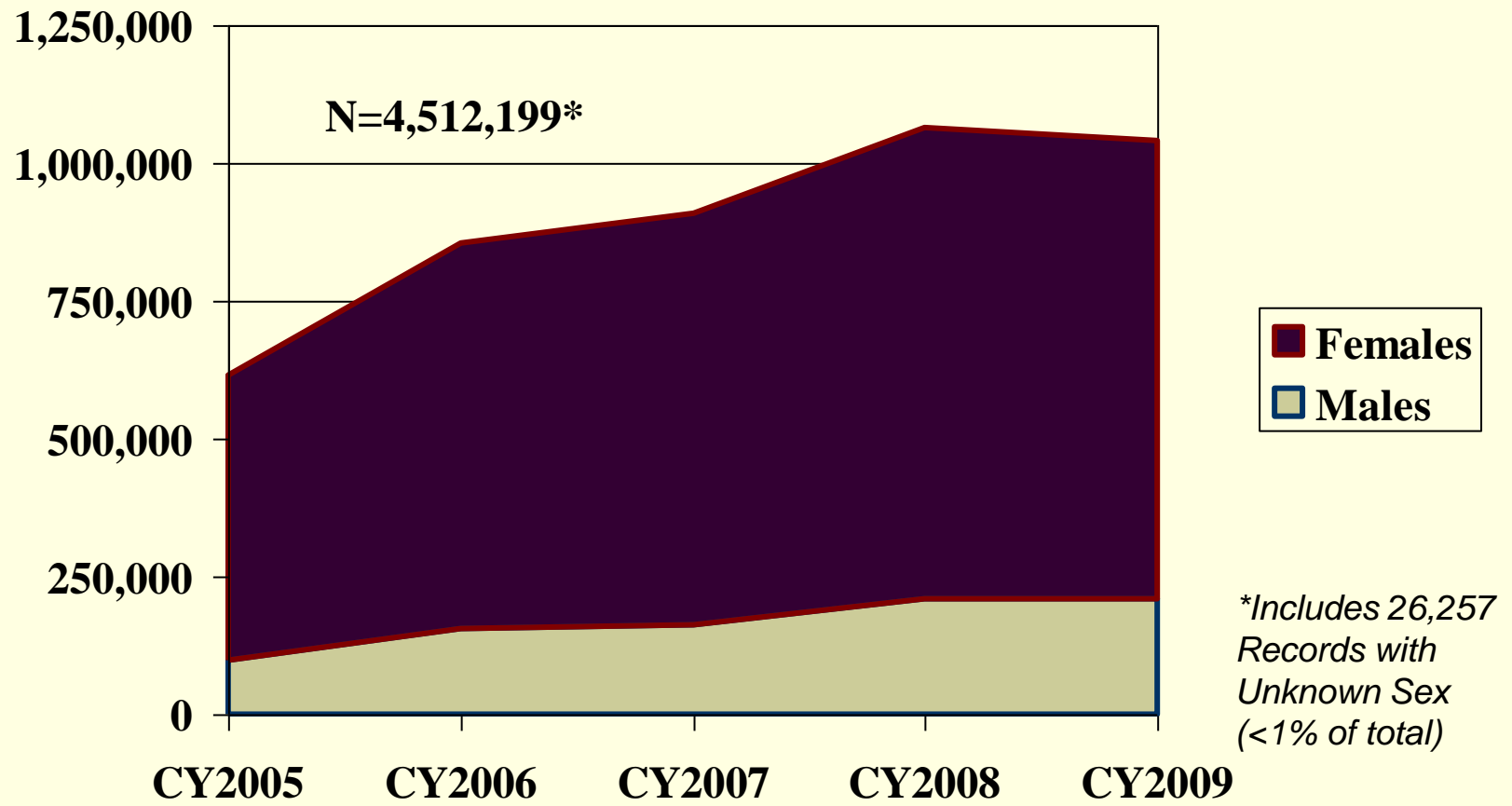
Source: Region IV Infertility Prevention Project Prevalence Monitoring Data

Total number of CT/GC tests by year, by facility type¹, CY2005-CY2009



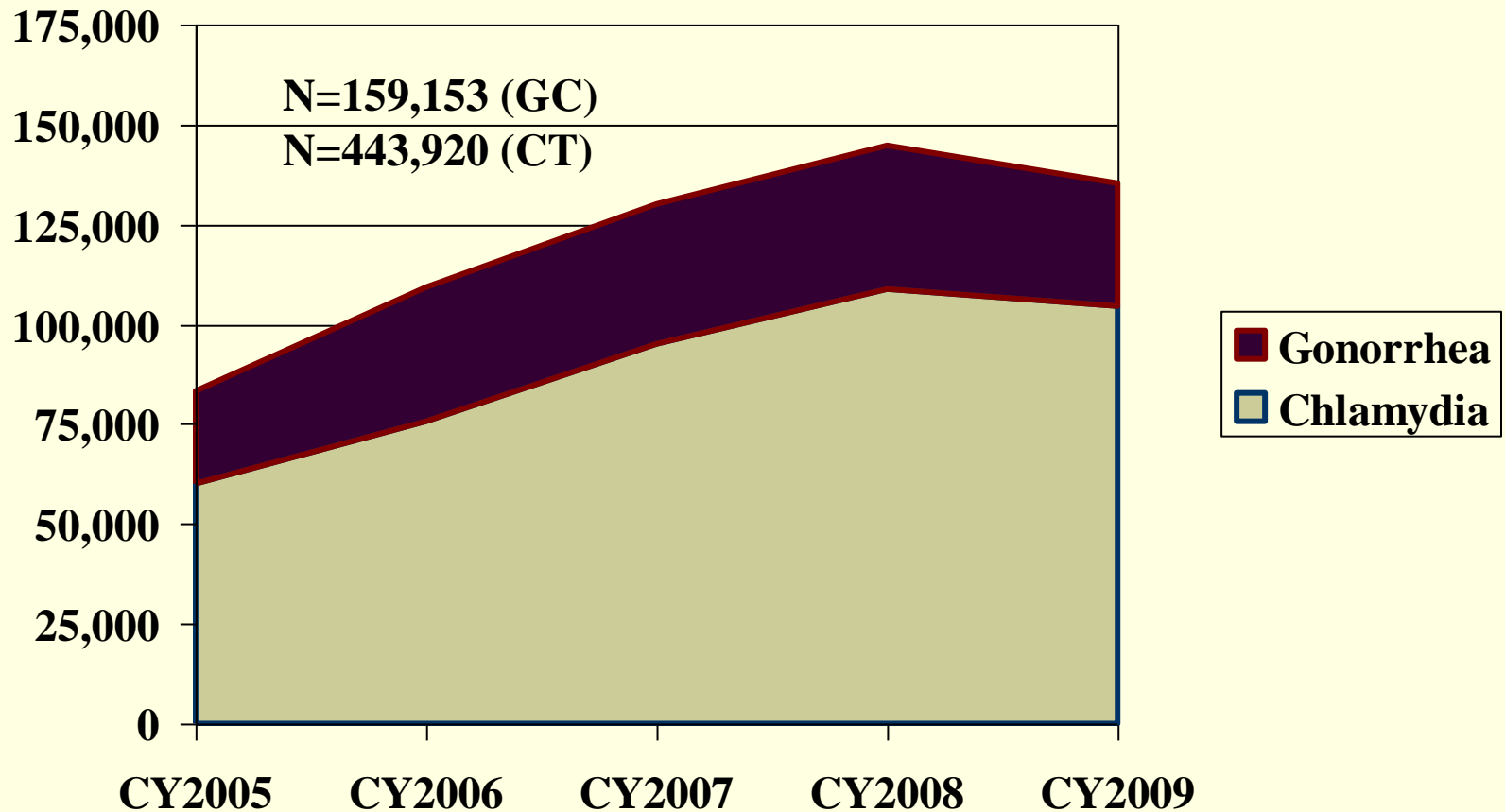
¹ Pre-2008: Based on “clin_typ”; Post-2008: Based on “facility_type” and “visit_type”.

Total number of CT/GC tests reported by year, by sex, CY2005-CY2009



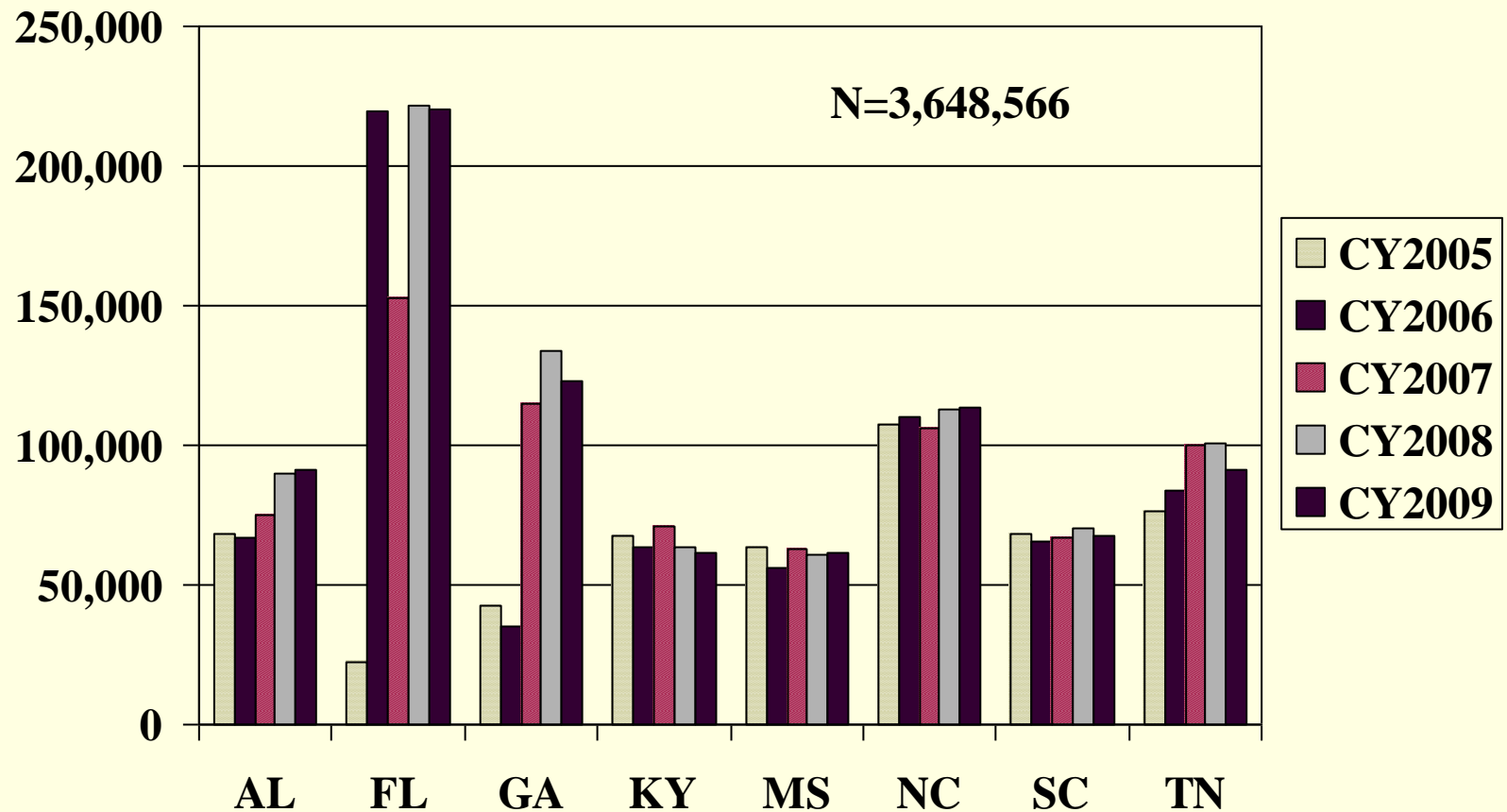
Source: Region IV Infertility Prevention Project Prevalence Monitoring Data

Total number of positive CT/GC tests reported by year, CY2005-CY2009



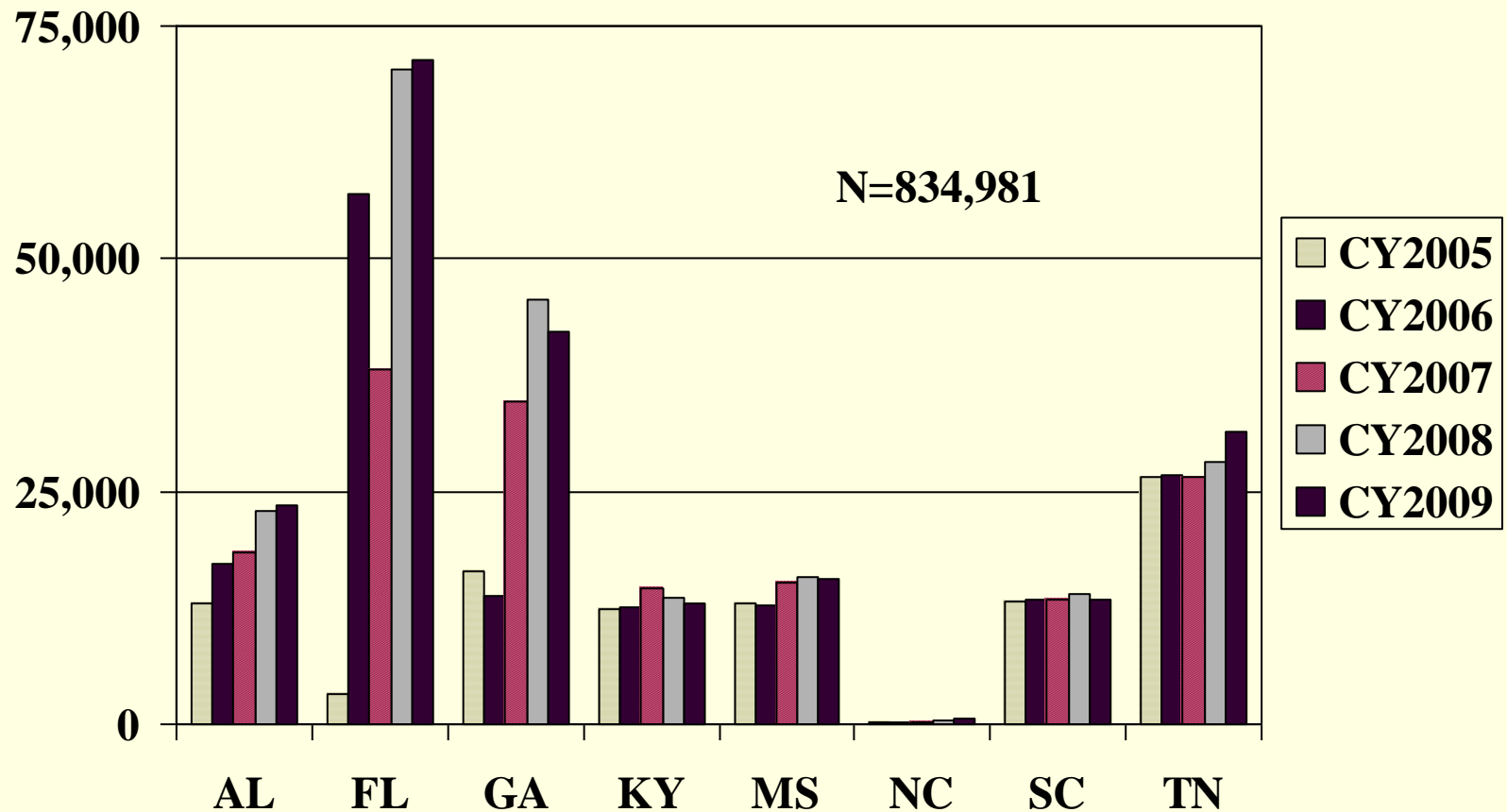
Source: Region IV Infertility Prevention Project Prevalence Monitoring Data

Number of CT/GC tests reported among females, by state, CY2005-09



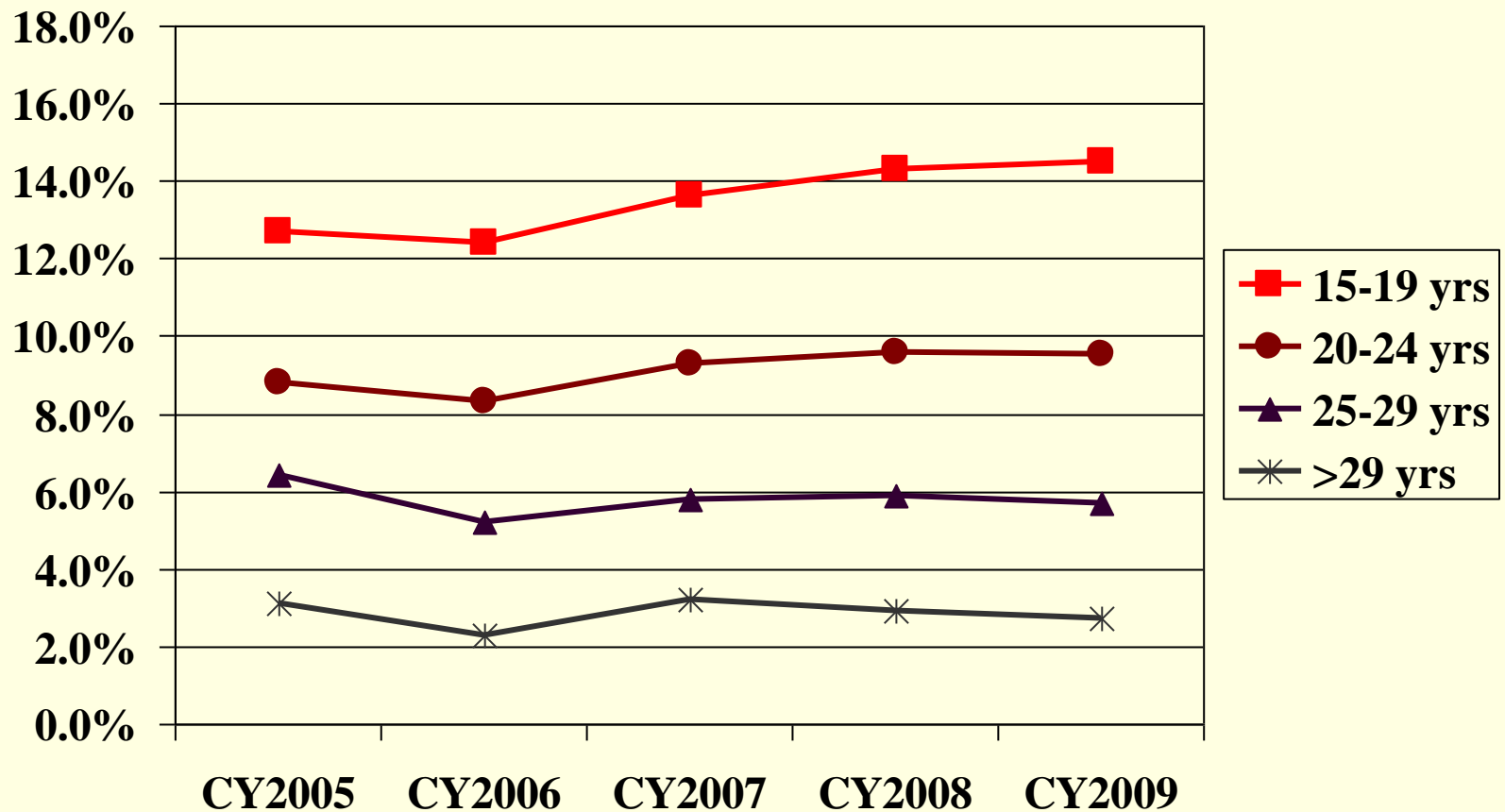
Source: Region IV Infertility Prevention Project Prevalence Monitoring Data

Number of CT/GC tests reported among males, by state, CY2005-09



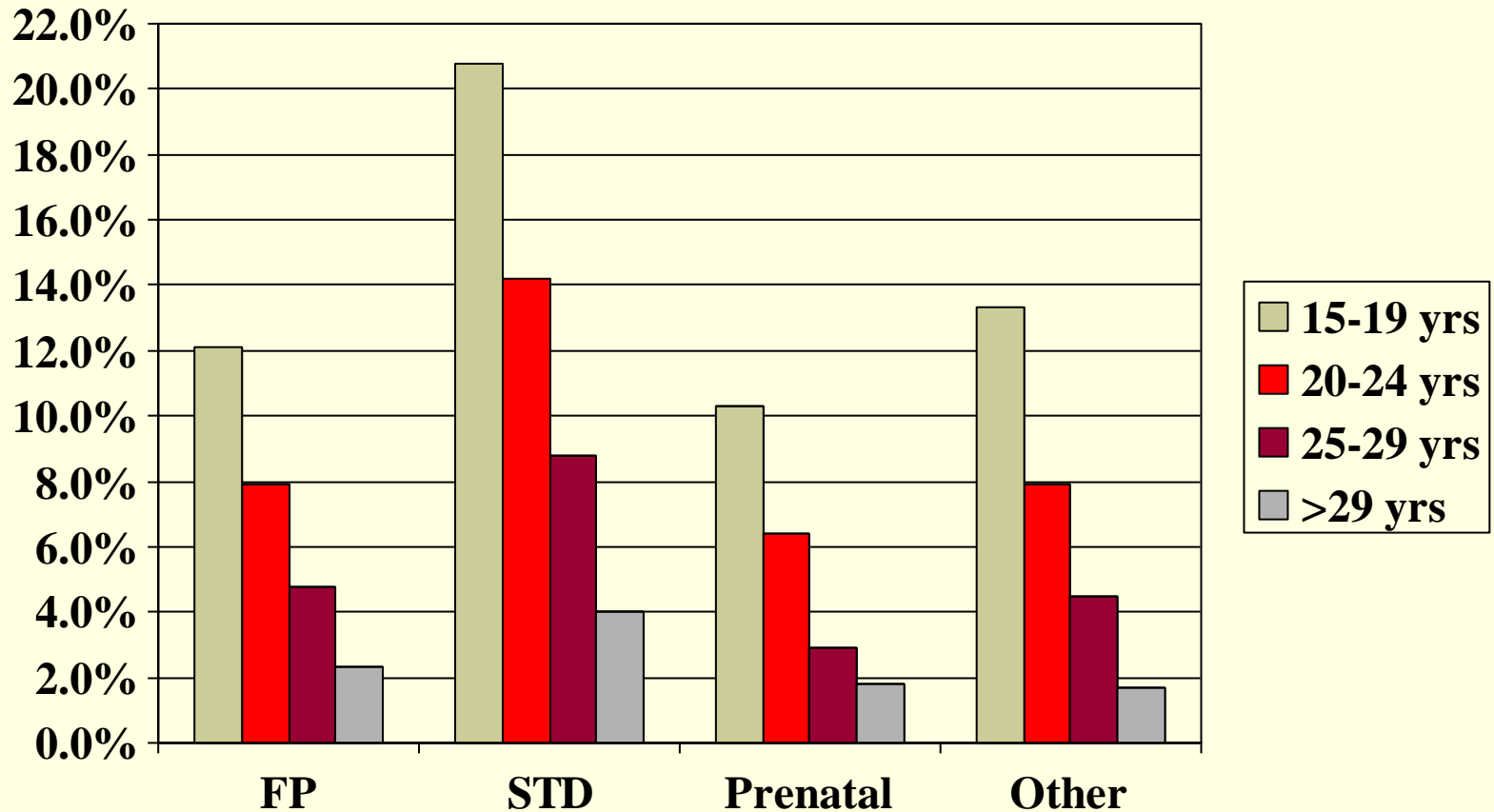
Source: Region IV Infertility Prevention Project Prevalence Monitoring Data

Chlamydia positivity among females by age group, CY2005-CY2009



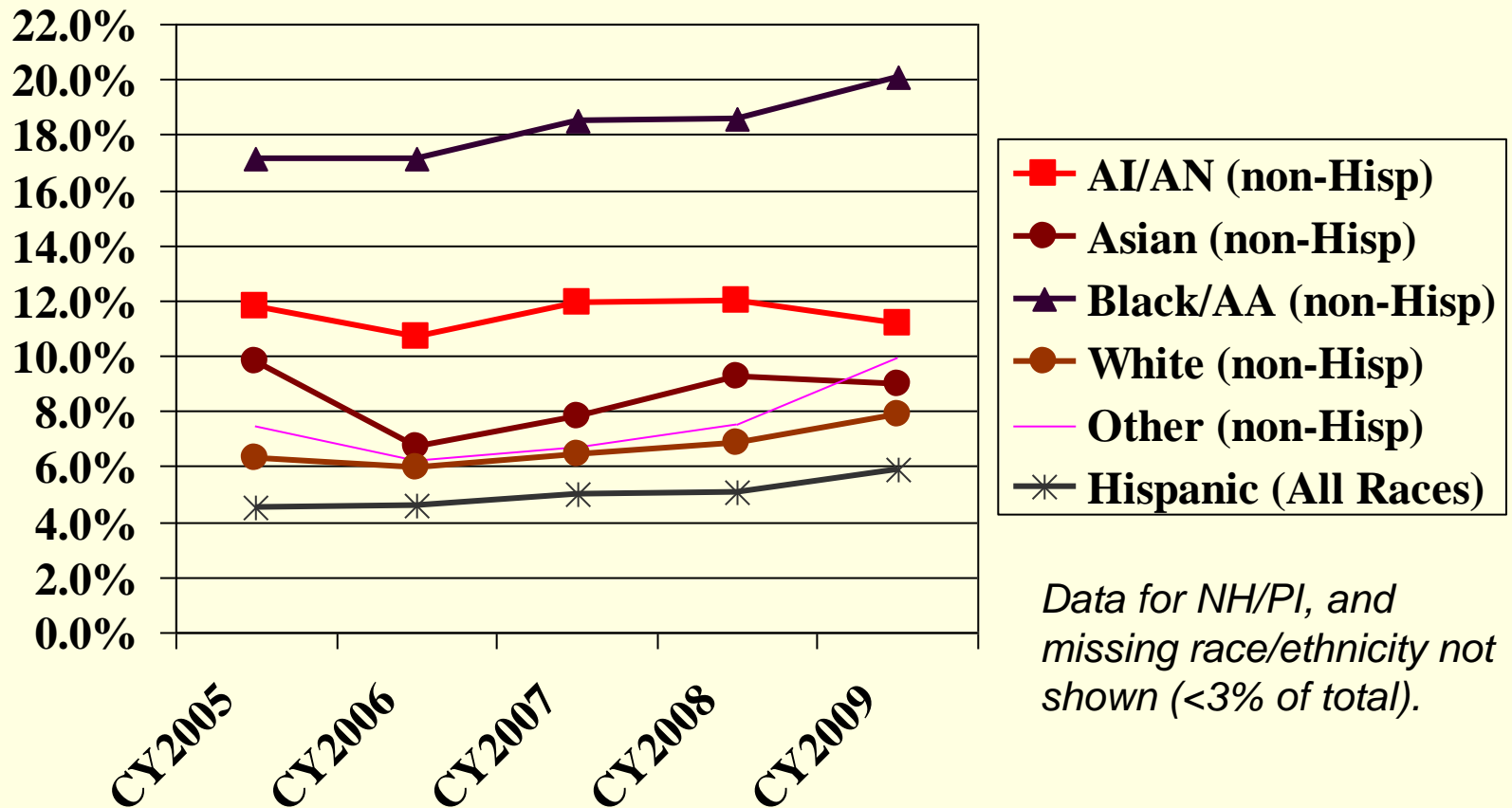
Source: Region IV Infertility Prevention Project Prevalence Monitoring Data

Chlamydia positivity among females by age group and visit type, CY2009



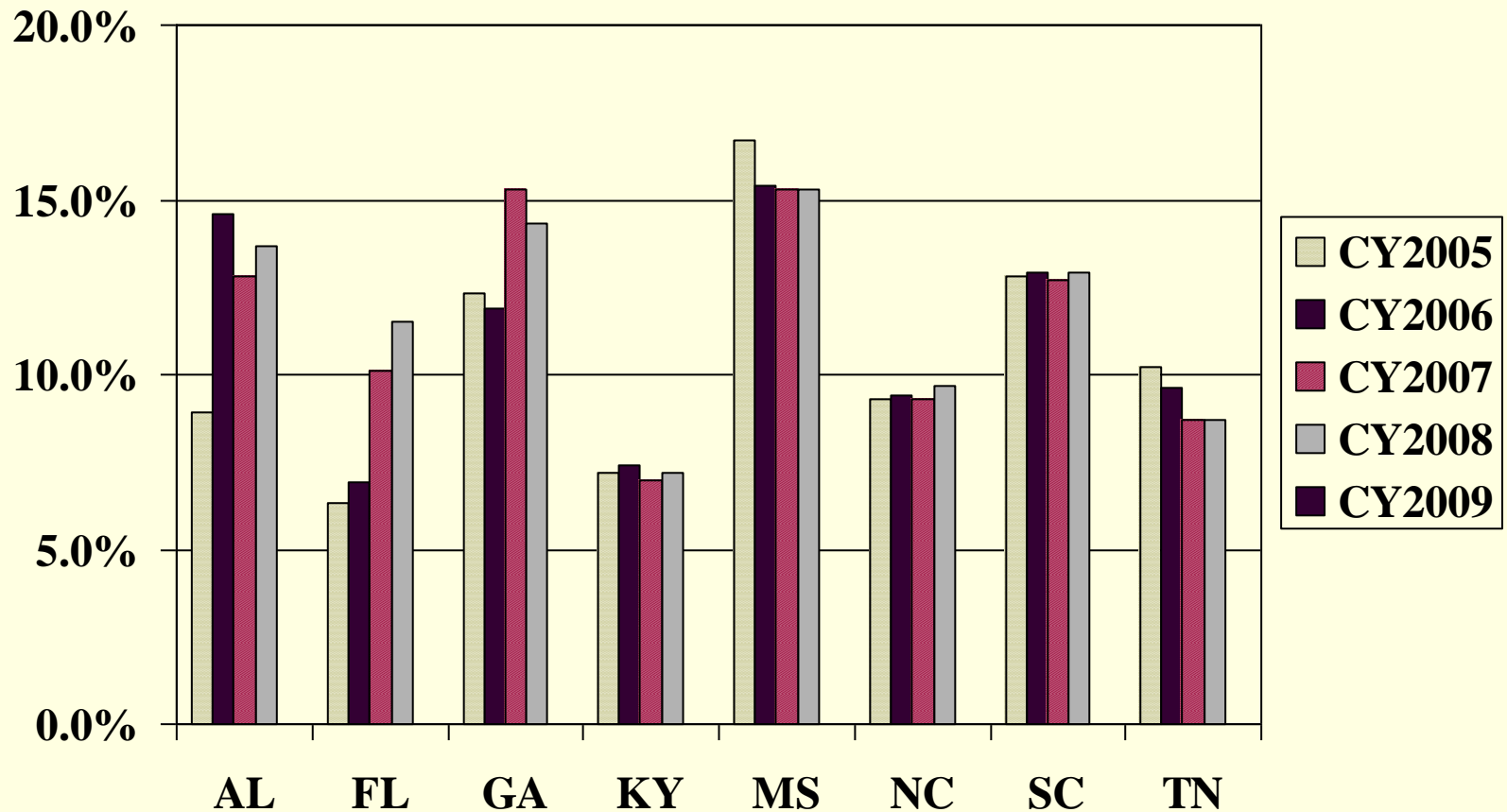
Source: Region IV Infertility Prevention Project Prevalence Monitoring Data

Chlamydia positivity among females aged 15-24 yrs, by race/ethnicity



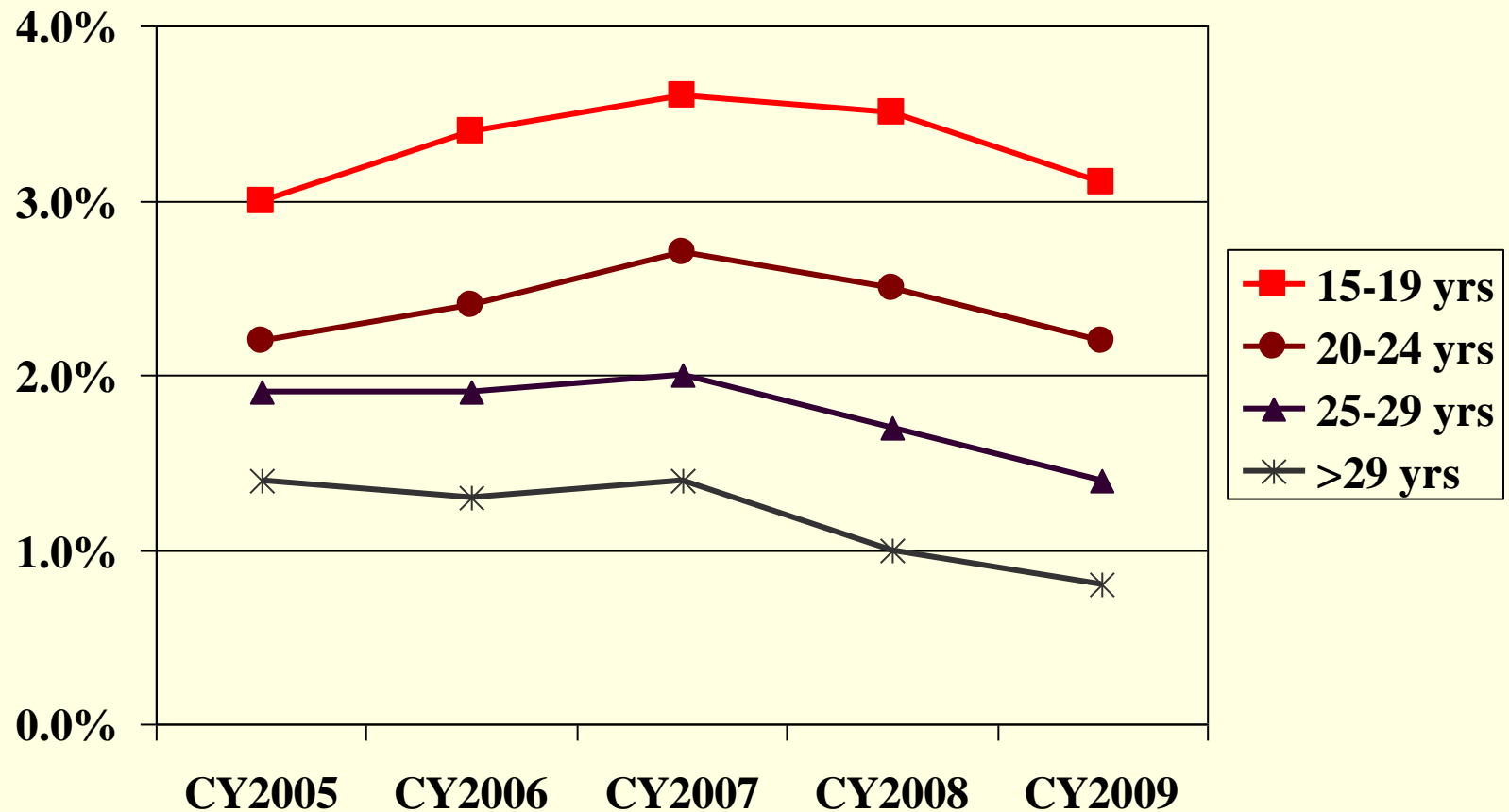
Source: Region IV Infertility Prevention Project Prevalence Monitoring Data

Chlamydia positivity among females aged 15-24 yrs, by state, CY2005-09



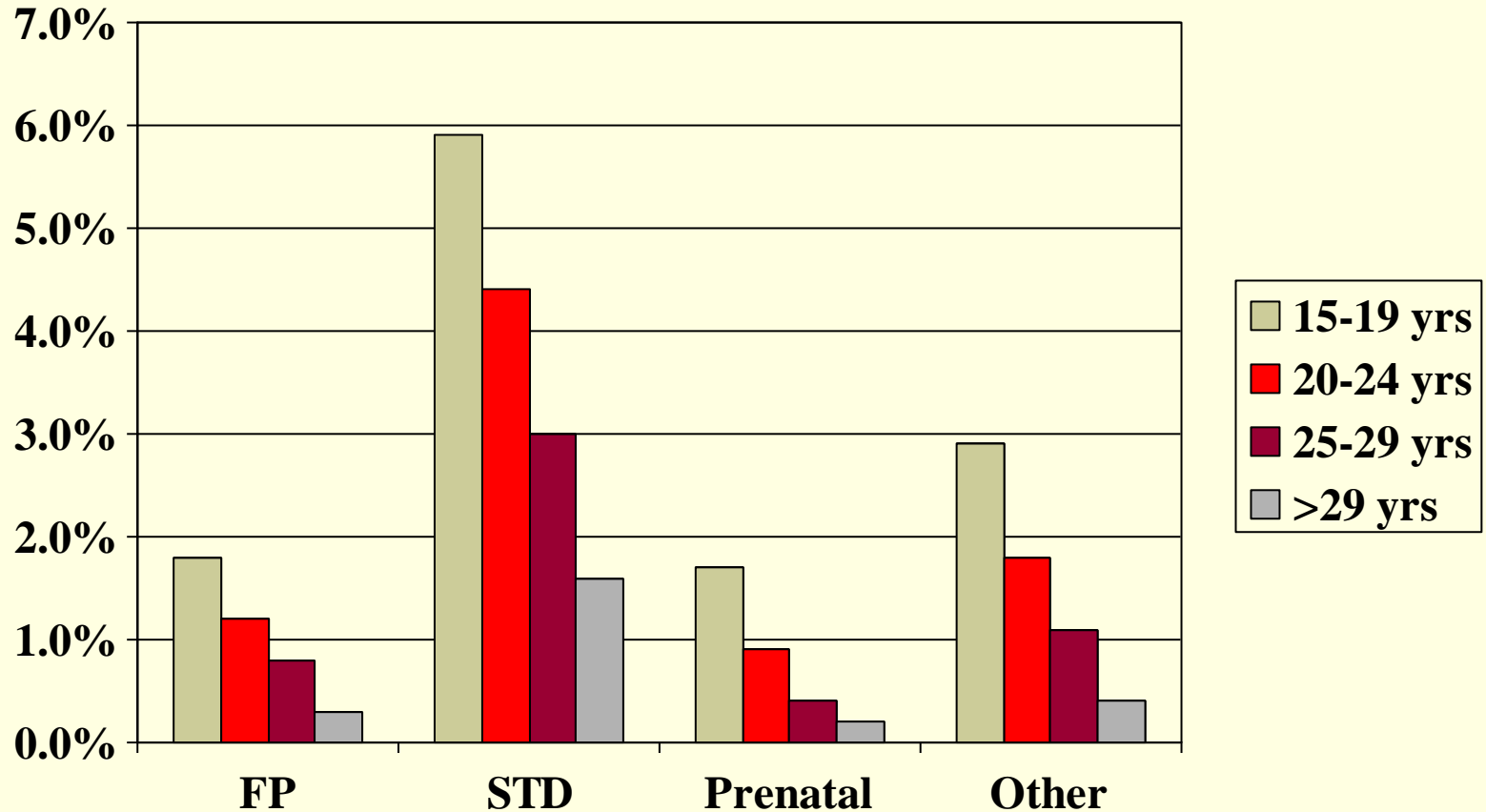
Source: Region IV Infertility Prevention Project Prevalence Monitoring Data

Gonorrhea positivity among females by age group, CY2005-CY2009



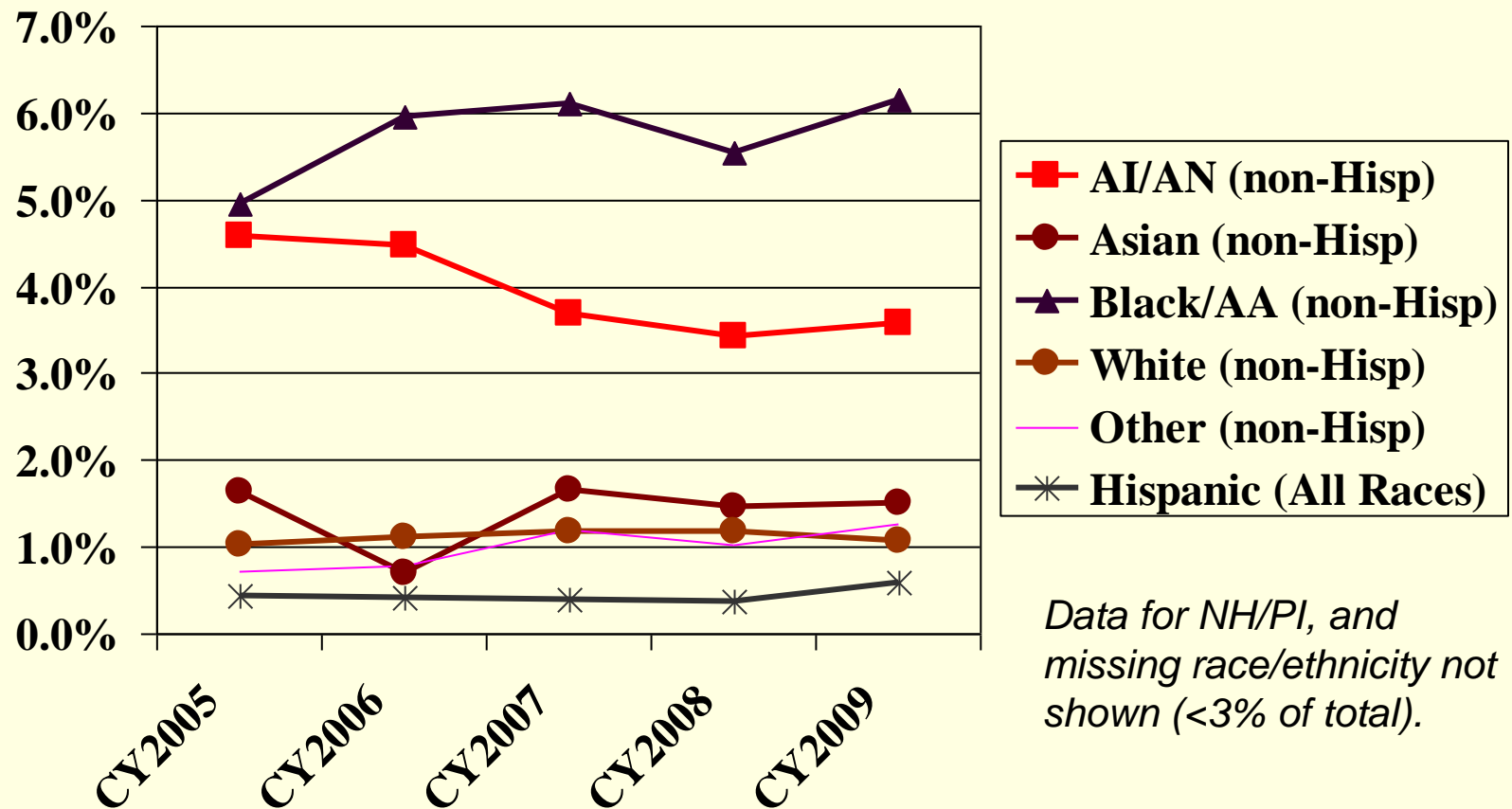
Source: Region IV Infertility Prevention Project Prevalence Monitoring Data

Gonorrhea positivity among females by age group and visit type, CY2009



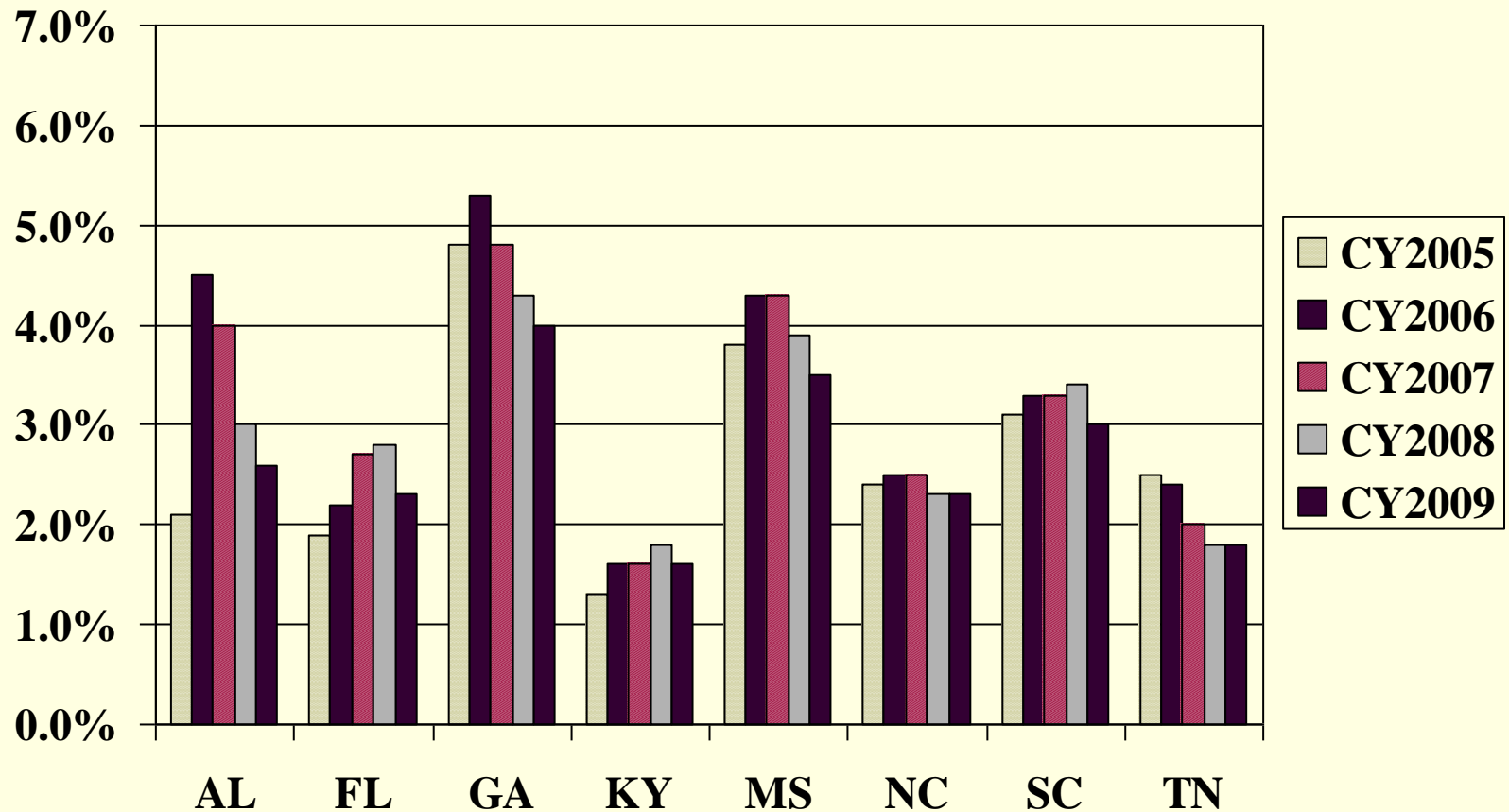
Source: Region IV Infertility Prevention Project Prevalence Monitoring Data

Gonorrhea positivity among females aged 15-24 yrs, by race/ethnicity



Source: Region IV Infertility Prevention Project Prevalence Monitoring Data

Gonorrhea positivity among females aged 15-24 yrs, by state, CY2005-09

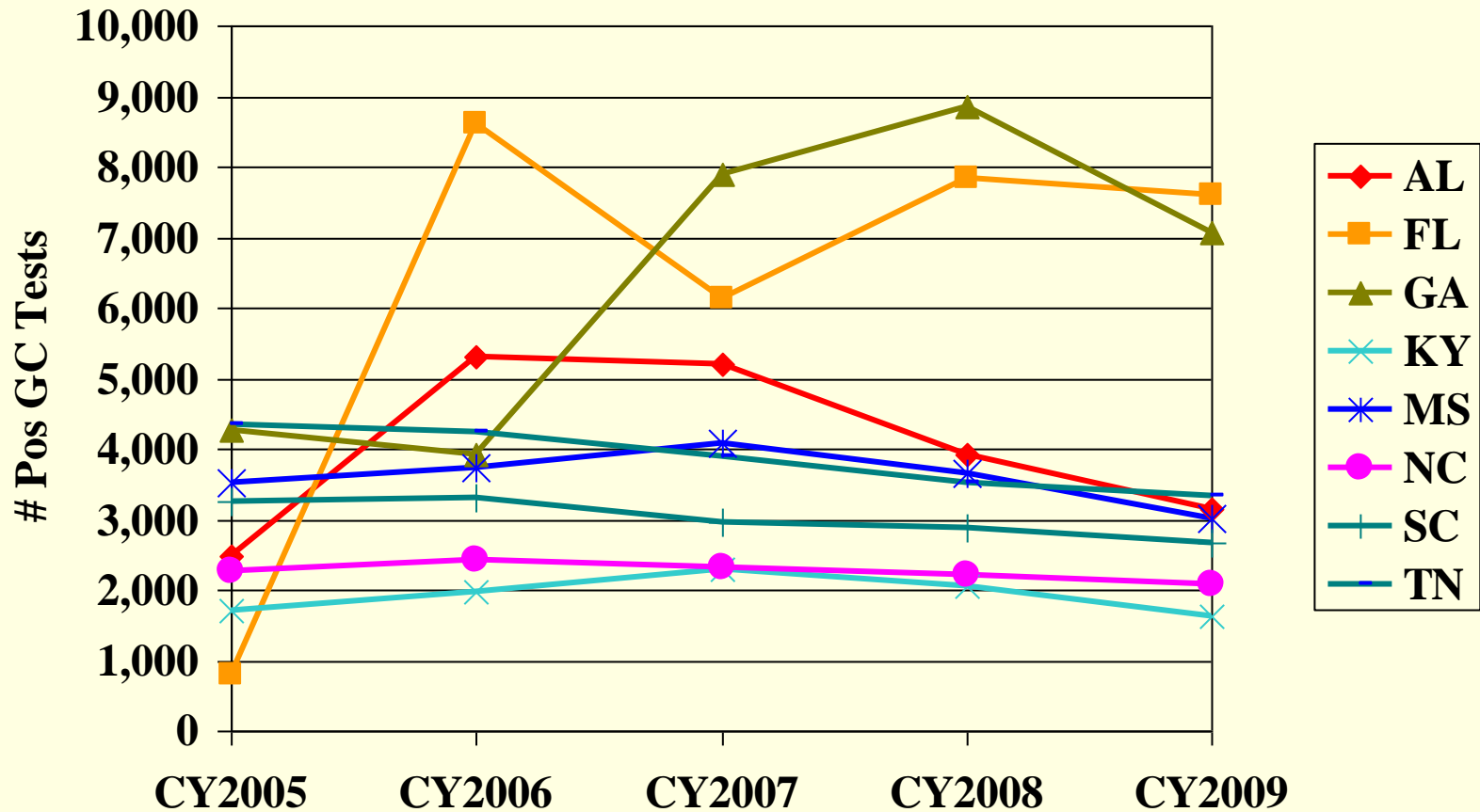


Source: Region IV Infertility Prevention Project Prevalence Monitoring Data

Reducing Health Disparities

Project Area GC action plan indicators
Trends in the identification of GC cases
GC trends for IPP facilities in target areas

Trends in GC Case Identification through IPP sites, by State by Year



Source: Region IV IPP Prevalence Monitoring Data

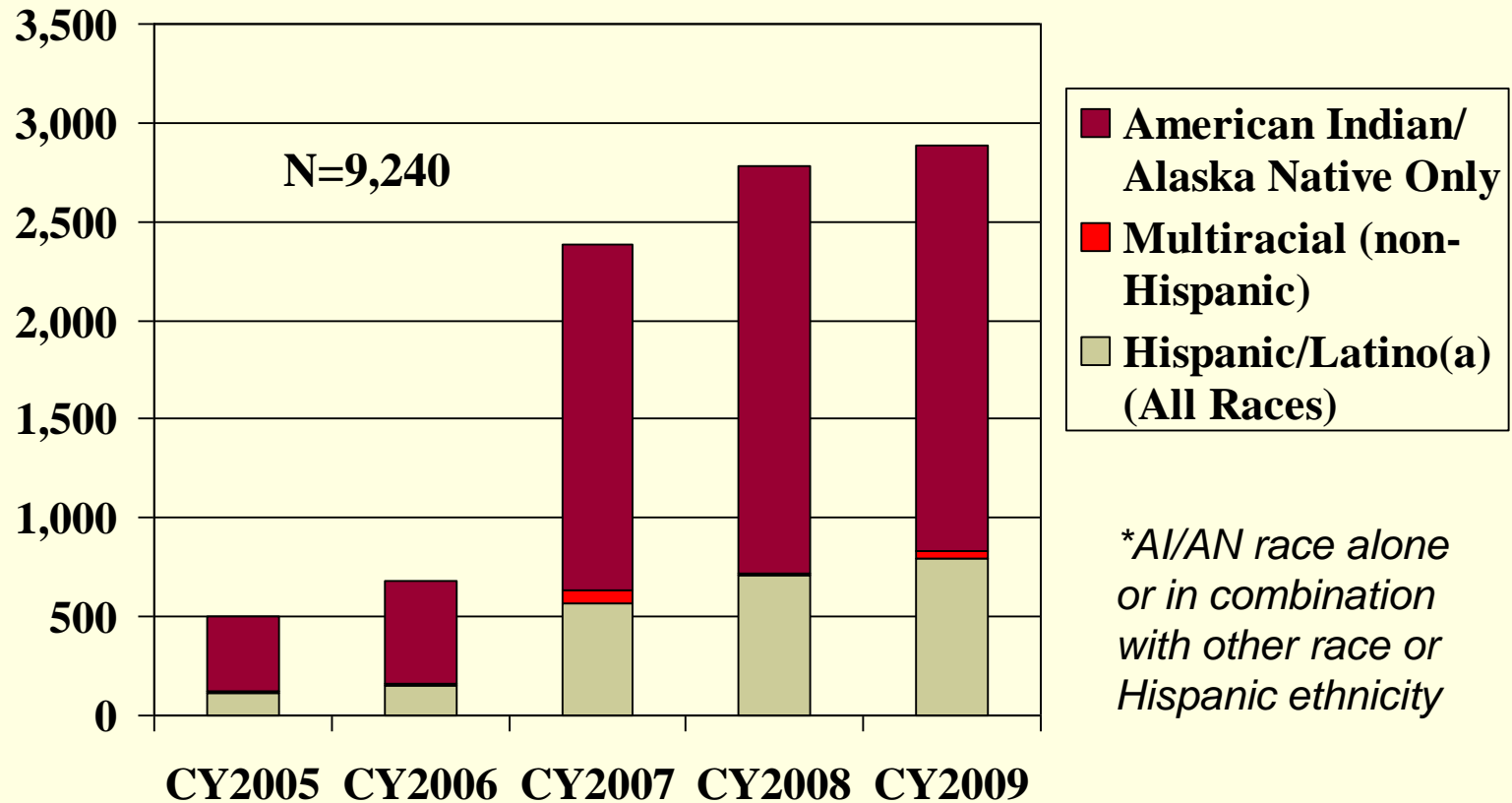
GC Action Plan Progress

- State report out

American Indian/Alaska Native (AI/AN) Priorities

Health Disparities
CT/GC screening and trends

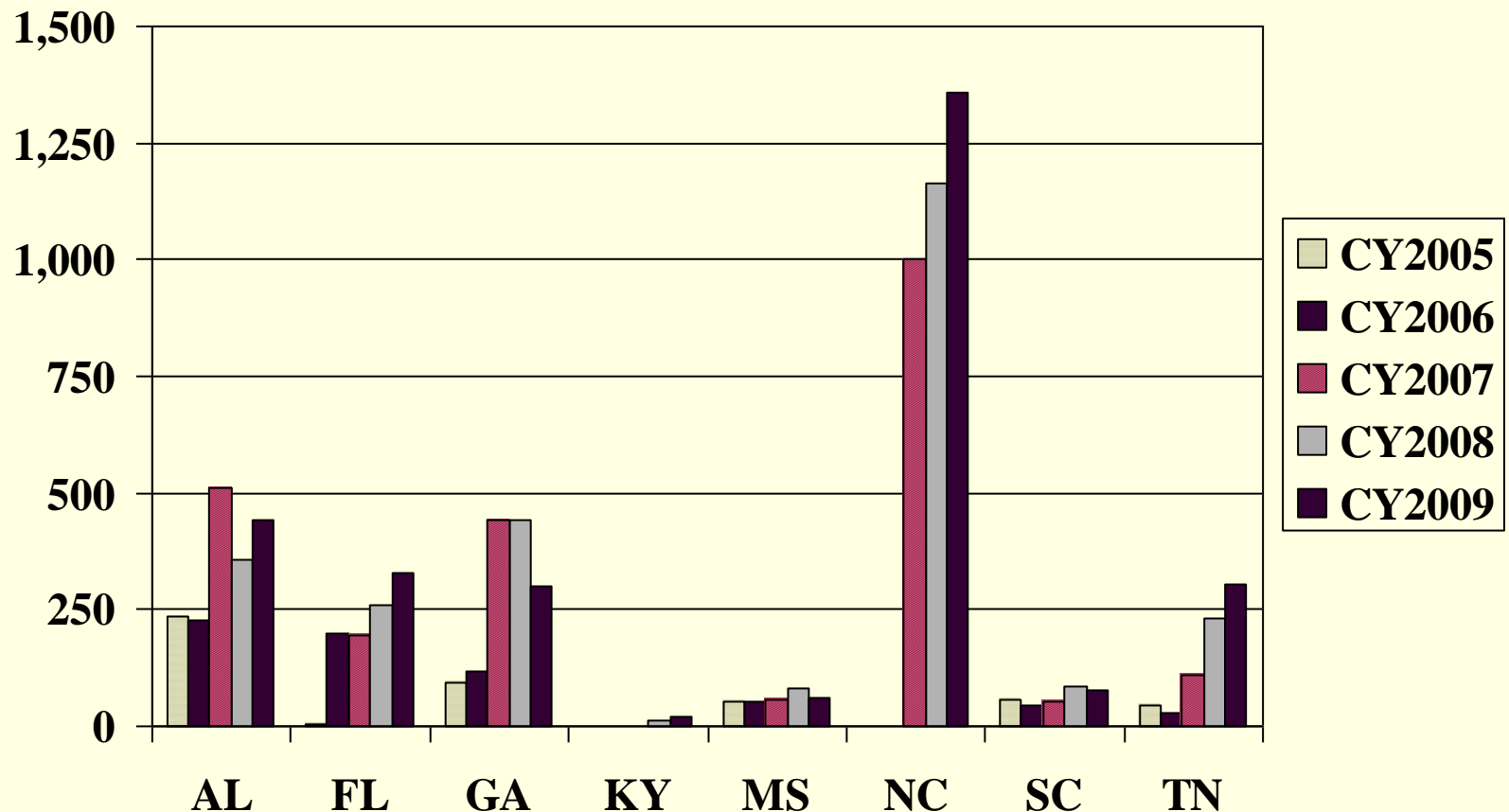
Number of CT/GC tests among AI/AN*, by Year, CY2005-2009



Source: Region IV Infertility Prevention Project Prevalence Monitoring Data

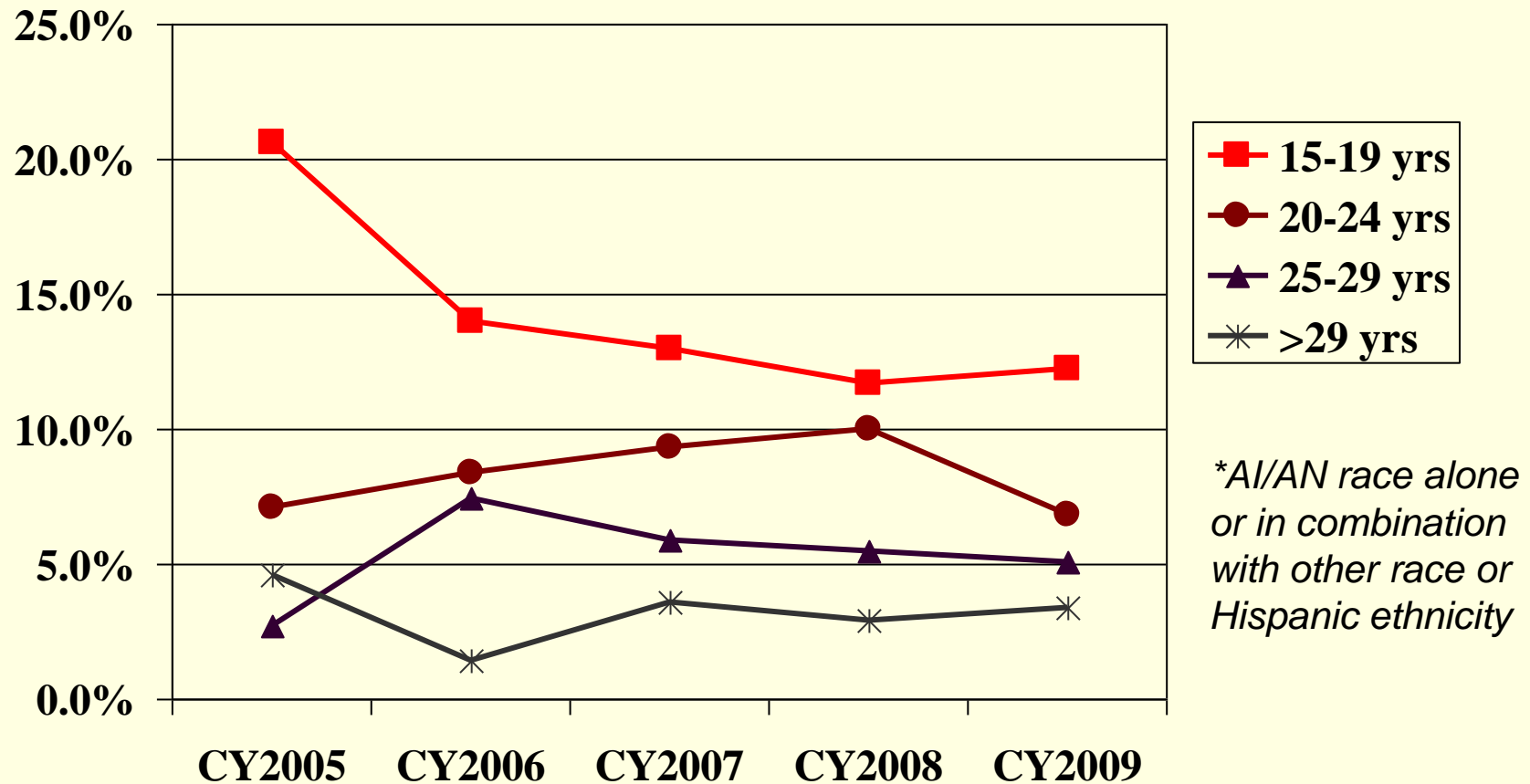
Number of CT/GC tests among AI/AN*, by State, by Year, CY2005-CY2009

**AI/AN race alone or in combination with other race or Hispanic ethnicity*



Source: Region IV Infertility Prevention Project Prevalence Monitoring Data

Chlamydia positivity among AI/AN* females by age, CY2005-CY2009



Source: Region IV Infertility Prevention Project Prevalence Monitoring Data

Partnering with Community Health Centers

IPP screening data trends

CT/GC testing and positivity in Community Health Centers, CY05-09

| Region IV | | CY05 | CY06 | CY07 | CY08 | CY09 |
|---|---------------|-------|-------|-------|--------|--------|
| # CHC Facilities Reporting ¹ | | 12 | 10 | 11 | 16 | 16 |
| Overall | # CT/GC Tests | 8,235 | 8,340 | 9,276 | 16,634 | 18,214 |
| | % CT pos | 5.9% | 5.5% | 5.4% | 10.3% | 9.3% |
| | % GC pos | 1.6% | 1.9% | 2.1% | 6.0% | 4.9% |
| Females aged 15-24 years | # CT/GC Tests | 3,063 | 2,956 | 3,125 | 5,133 | 5,549 |
| | % CT pos | 9.0% | 8.2% | 8.0% | 12.7% | 12.1% |
| | % GC pos | 2.2% | 1.9% | 2.2% | 5.1% | 4.8% |

¹Kentucky reported 98.8% of all records submitted by CHCs in CY2009

Source: Region IV Infertility Prevention Project Prevalence Monitoring Data

Increasing Chlamydia Screening Coverage

Screening Coverage in Family Planning
Use of Urine and Vaginal Swabs
Plotting Exercise

Chlamydia Screening Coverage

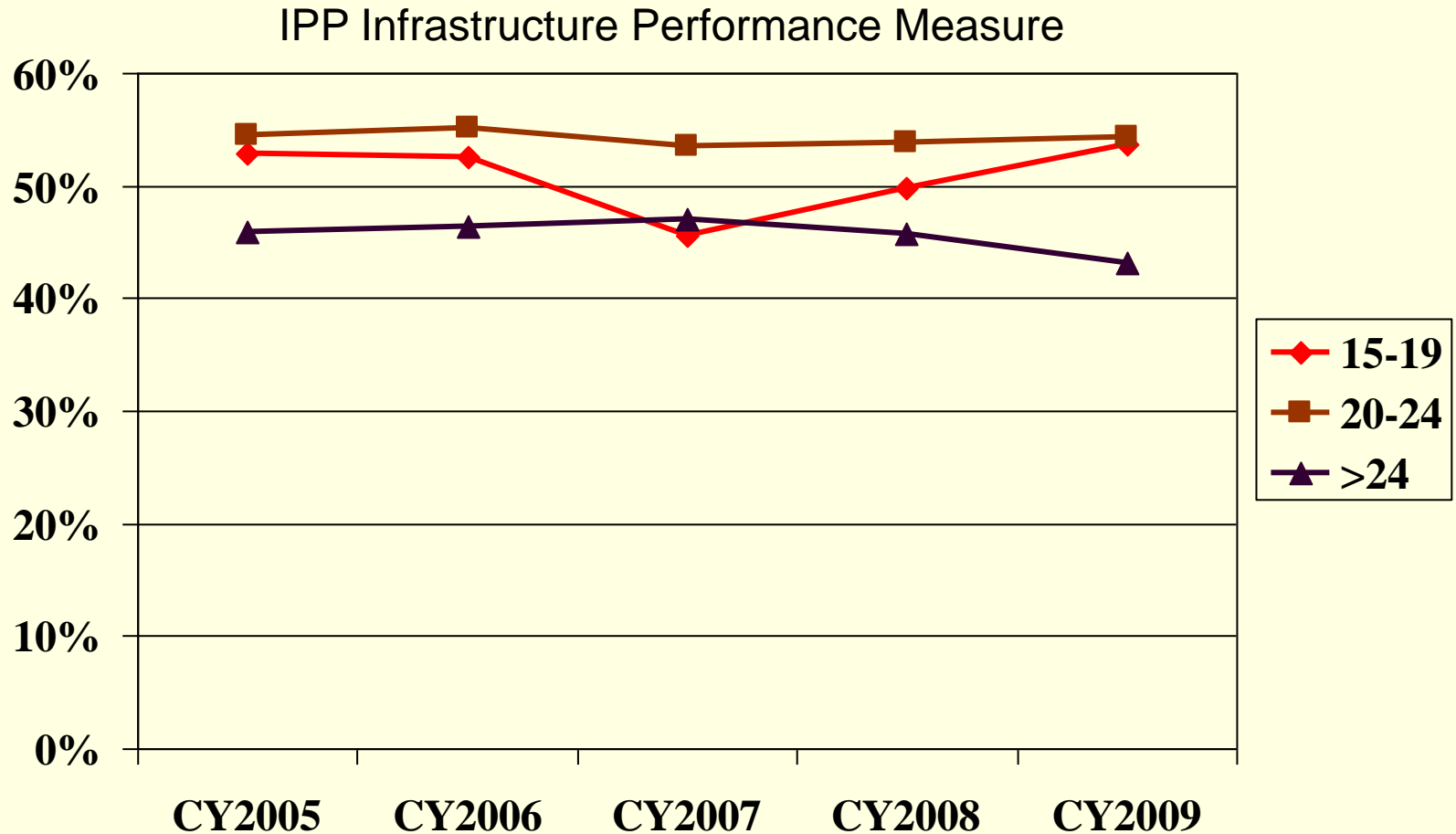
- **FY2011 Regional Performance Goal:**
Increase the estimated screening coverage among females 15-19 years old to at least 50% for each of the ten Title X Grantees.
 - Region IV, CY2008: 49.8% (Baseline)
 - Region IV, CY2009: 53.6%
 - Range (By Title X Grantee): 42.4% to 73.6%
 - 2 Title X Grantees <50%
 - 5 Title X Grantees ≥60%

Estimated Screening Coverage among Female FP Users, CY2008-CY2009

| Region IV | Age Group (Years) | # Undup Females Tested | # Undup Females | Estimated Screening Coverage (%) |
|----------------|-------------------|------------------------|-----------------|----------------------------------|
| CY 2008 | 15-19 | 114,051 | 229,167 | 49.8% |
| | 20-24 | 165,993 | 308,399 | 53.8% |
| | >24 | 202,586 | 441,916 | 45.8% |
| | TOTAL | 482,630 | 979,482 | 49.3% |
| CY 2009 | 15-19 | 115,329 | 215,237 | 53.6% |
| | 20-24 | 166,434 | 306,308 | 54.3% |
| | >24 | 192,709 | 445,601 | 43.2% |
| | TOTAL | 474,472 | 967,146 | 49.1% |

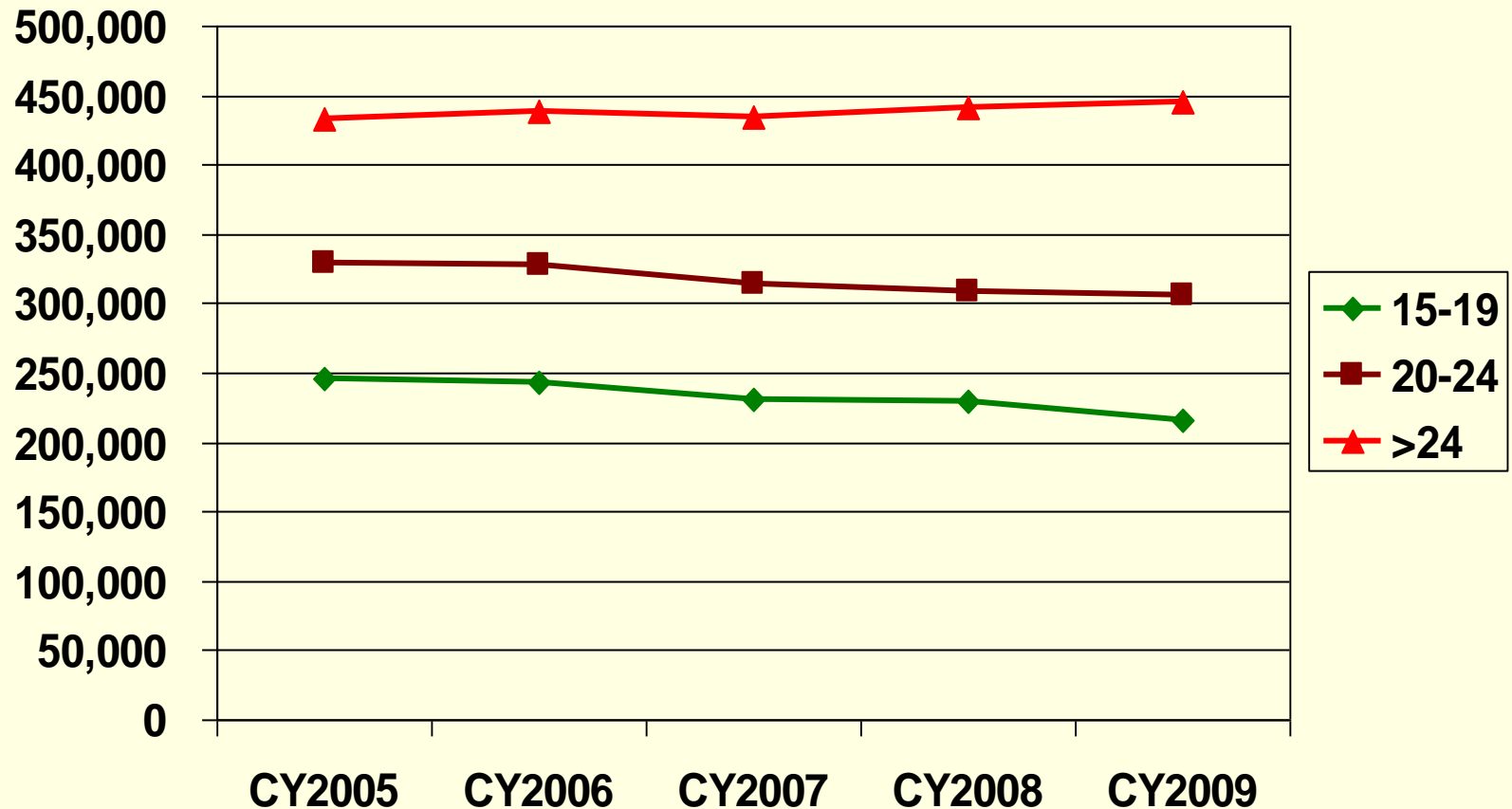
Source: OPA Family Planning Annual Report (FPAR), Tables 1 & 11, Region IV

CT Screening Coverage Among Female FP Users by Age, by Year, CY2005-CY2009



Source: OPA Family Planning Annual Report (FPAR), Tables 1 & 11, Region IV

Number of Unduplicated Female FP Users by Age Group by Year, CY2005-CY2009

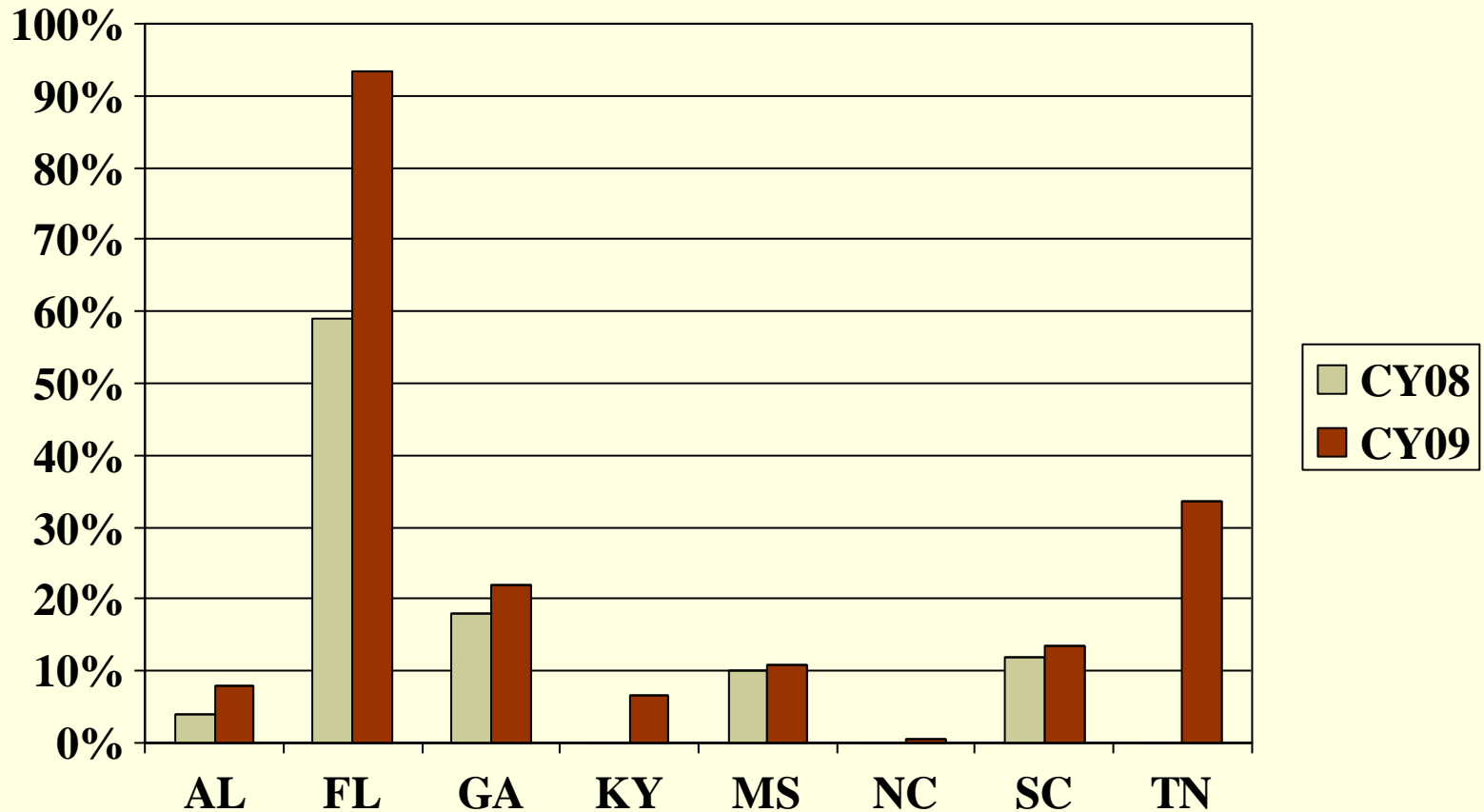


Source: OPA Family Planning Annual Report (FPAR), Tables 1 & 11, Region IV

Considerations

- Local screening guidelines
- Missed opportunities
 - cf. Assessment of Gaps
- Use of urine or self-collected vaginal swab

Proportion of female CT/GC tests conducted by urine by state, CY08-09



Source: Region IV Infertility Prevention Project Prevalence Monitoring Data

Percent of Female CT Tests Performed by Specimen Source by State, CY2009

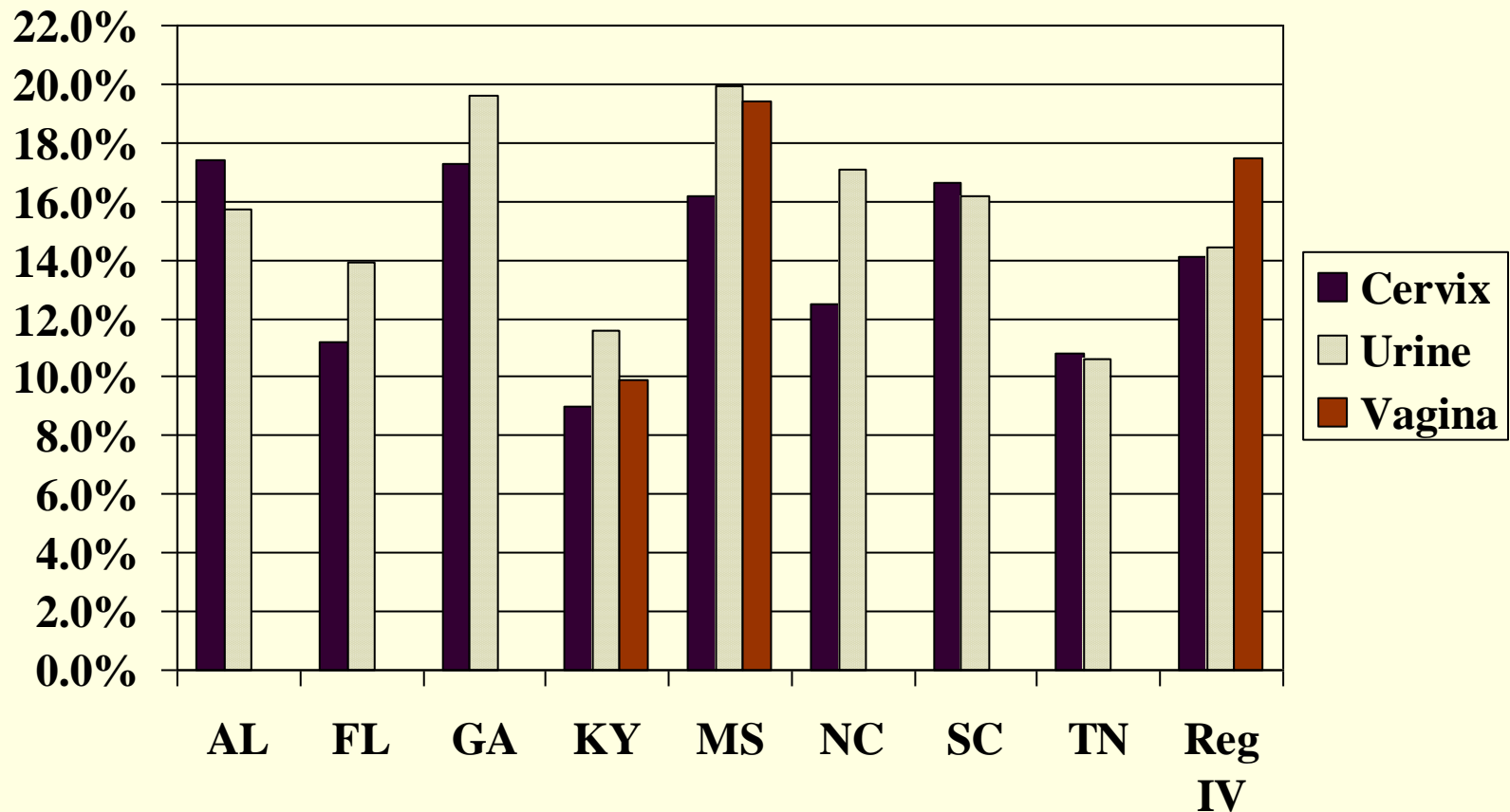
| Spec Source | AL | FL | GA | KY | MS | NC | SC | TN |
|-------------|-------|-------|-------|-------|-------|-------|-------|-------|
| Cervix | 74.7% | 2.7% | 74.7% | 81.1% | 21.1% | 98.6% | 84.1% | 65.7% |
| Urine | 8.0% | 93.4% | 21.9% | 6.7% | 10.9% | 0.6% | 13.6% | 33.7% |
| Vagina* | 0.7% | 1.6% | 0.0% | 11.7% | 67.8% | 0.0% | 0.4% | 0.0% |
| Other | 4.0% | 2.2% | 1.0% | 0.1% | 0.1% | 0.0% | 0.7% | 0.0% |
| Unkwn | 12.7% | 0.0% | 2.5% | 0.3% | 0.0% | 0.8% | 1.2% | 0.6% |

**May include clinician collected or self collected vaginal swab.*

NAAT = Nucleic Acid Amplification Tests

Source: Region IV Infertility Prevention Project Prevalence Monitoring Data

CT positivity among females aged 15-19 yrs, by specimen source, by state, CY2009



Source: Region IV Infertility Prevention Project Prevalence Monitoring Data

Plotting Exercise

Table 7A