

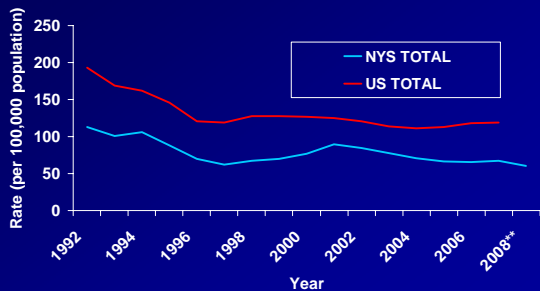
Optimizing Partner Management Strategies For Gonorrhea With Limited Resources

Dennis Murphy
Bureau of STD Control
New York State Department of Health
dpm04@health.state.ny.us

DATA SOURCES

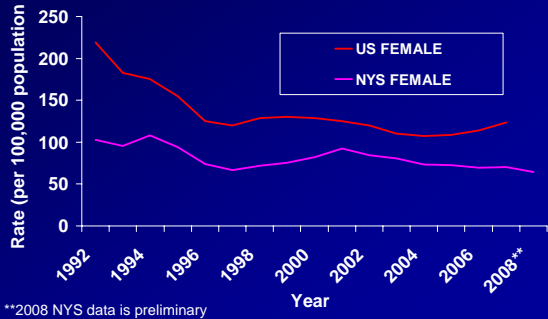
- New York State Department of Health, Bureau of STD Control
- Division of STD Prevention. STD Surveillance, U.S. Department of Health and Human Services, Public Health Service, Centers for Disease Control and Prevention

Gonorrhea-Reported Rates: NYS Exclusive of NYC and United States, 1992-2008

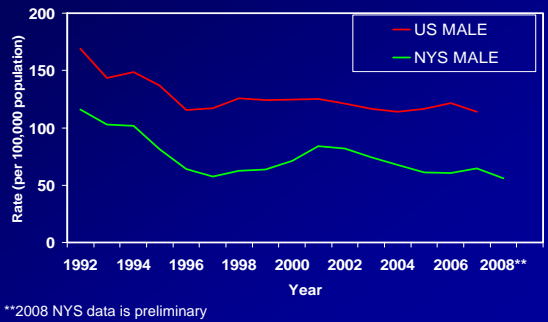


**2008 NYS data is preliminary

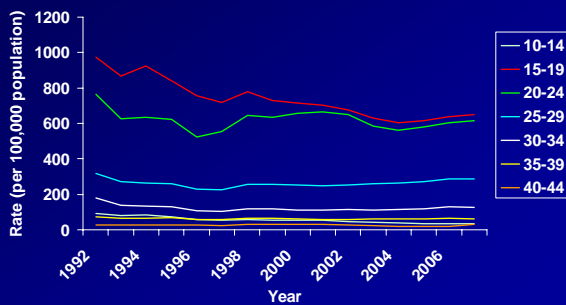
Gonorrhea-Women-Reported Rates: NYS Exclusive of NYC and United States, 1992-2008



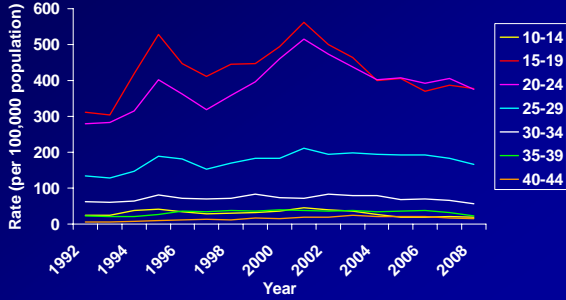
Gonorrhea-Men-Reported Rates: NYS Exclusive of NYC and United States, 1992-2008



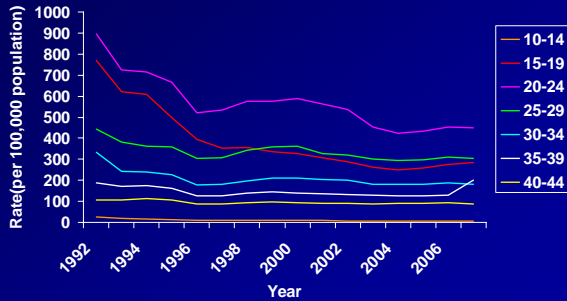
Gonorrhea-Women-Reported Rates by Age: United States, 1992-2007



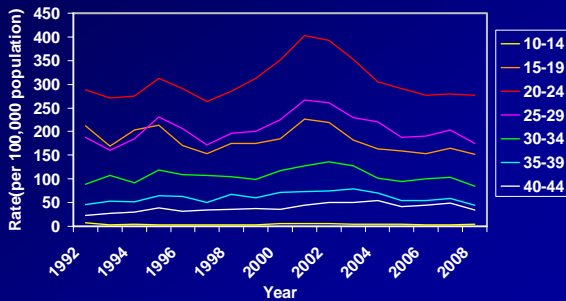
Gonorrhea-Women-Reported Rates by Age: NYS Exclusive of NYC, 1992-2008



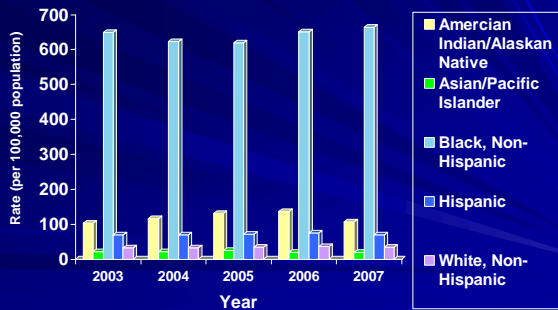
Gonorrhea-Men-Reported Rates by Age: United States, 1992-2007



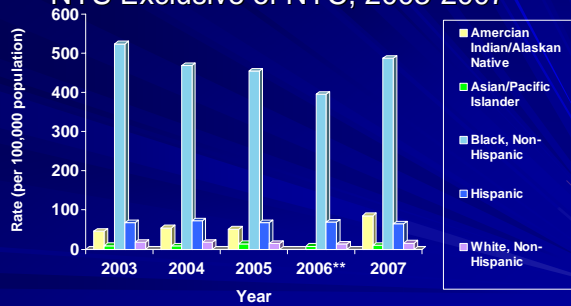
Gonorrhea-Men-Reported Rates by Age: NYS Exclusive of NYC, 1992-2008



Gonorrhea-Rates by Race/Ethnicity: United States, 2003-2007



Gonorrhea-Rates by Race/Ethnicity: NYS Exclusive of NYC, 2003-2007*



* These data should be interpreted with caution; 30% of NYS Race/Ethnicity data are missing

** 2006 American Indian Rate not included

Key Terms

- **Core** - Census tract with 50% of morbidity
- **Adjacent** - Census tract with 30% of morbidity
- **Peripheral** - Remaining Census tracts with 20% of morbidity

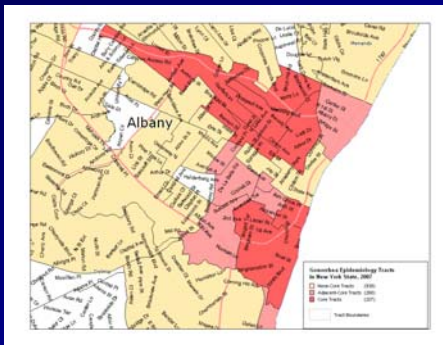
Key Terms (cont.)

- **Self Selection** - core infected patients are most likely to have selected their partners from the core area. Adjacent cases are most likely to become infected due to exposure with a core resident
- **Force of Infectivity** - the time period between infection and treatment

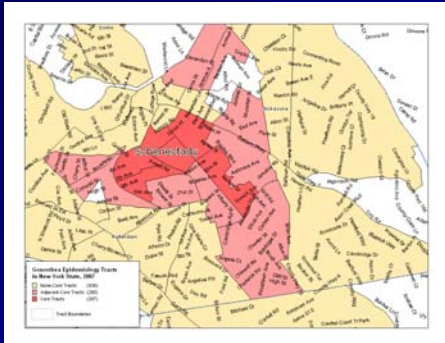
Characteristics of a Core Area

- **Small population compared to adjacent and peripheral areas**
- **High population density**
- **Low social economic status of residents**
- **Frequently, but not necessarily minority residents**
- **High number of repeat infection**

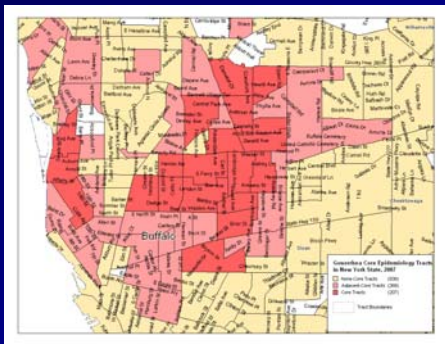
Gonorrhea Core Epidemiologic Tracts, Albany County, NYS, 2007



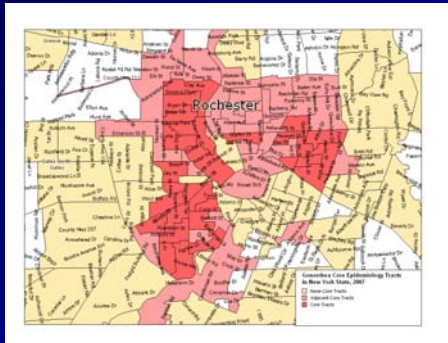
Gonorrhea Core Epidemiologic Tracts,
Schenectady County, NYS, 2007



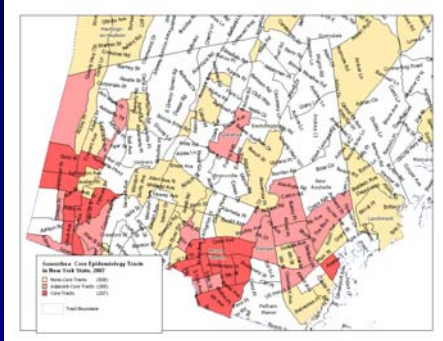
Gonorrhea Core Epidemiologic Tracts, Erie
County, NYS, 2007



Gonorrhea Core Epidemiologic Tracts,
Monroe County, NYS, 2007



Gonorrhea Core Epidemiologic Tracts,
Westchester County, NYS, 2007



**New York State's Approach to
Gonorrhea Partner Services**

- For transmission purposes all gonorrhea cases are not equal, therefore:
 - Intensely interview core residents
 - Only interview adjacent or peripheral cases if resources allow
 - Target gonorrhea screening to facilities and providers that serve the core population

**New York State's Approach to
Gonorrhea Partner Services
(cont.)**

- Interview as many core gonorrhea positive cases as possible, but at a minimum 35% - 40% of the total
- Target STD clinic services to meet the needs of the core population
- Don't be afraid to "tweek" the typical gonorrhea interview

Evaluation

- Reason for Examination
 - Voluntary / Symptomatic
 - Screening
 - Epi Investigation

QUESTIONS?
